

MICHELIN

INFLATABLE SOLUTIONS

AIR DRONE ARENA

—

INSTRUCTION MANUAL



This file contains all our recommendations to guide you in the use of your new Michelin Inflatable Solutions product.

We recommend that you read it very carefully the first time you use it, and refer to it if you have any doubts.

Our sales team remains at your disposal for any further information (**e-mail: commerce@inflatable.michelin.com**).

Product description

You have ordered an **Air Drone Arena**. This manual will guide you through all the steps involved in setting up your product.

2

CONTENTS

I. PRECAUTIONS FOR USE	4
II. CHECKING THE CONTENTS OF THE DELIVERY	5
III. LEGEND	6
IV. CHARACTERISTICS	7
V. INSTALLATION	9
VI. DISMANTLING	14
VII. PROBLEM SOLVING	16
VIII. MAINTENANCE	17
IX. WARRANTY CONDITIONS	18

I. PRECAUTIONS FOR USE

1. Uses involving risks

- ✓ Do not use machinery or cutting equipment near the structure, as this could damage it.



- ✓ Do not use abrasive ballast (breeze block, stone, metal), as this may cause premature damage to the perimeter of the shelter.



- ✓ Do not bring the shelter into contact with flammable or corrosive products, as this may damage the structure.



- ✓ It is strictly forbidden to smoke or install a heat source under or near the structures.



2. Limited conditions of use

- ✓ Your product is inflatable, so there is a risk that a bladder in your structure could leak. In this case, evacuate the people present under the structure, dismantle the structure and contact the after-sales service: sav@inflatable.michelin.com
- ✓ A systematic check is recommended when assembling your structure. If you notice any damage, dismantle the structure and contact the product distributor.
- ✓ Re-inflate regularly and after any major change in temperature.
- ✓ **In the case of operation in an events area** that qualifies as an ERP (establishment open to the public), refer to the standards of the country/commune (CTS type) for the rules applicable to the operator.









II - CHECKING THE CONTENTS OF THE DELIVERY

Elements included in a PACK :

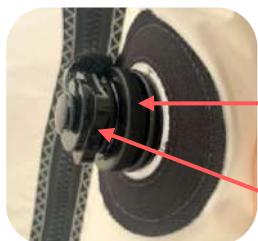
- 1x transport bag **(A)**
- 1x inflatable structure with nets **(B)**
- 6x guy ropes **(C)**
- 4x ballast bags **(D)**
- 1x repair kit **(E)**

Optional elements:

- 1x high flow pump **(F)**

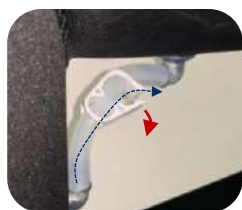
A	B	C	D
			
E	F		
			

III - LEGEND

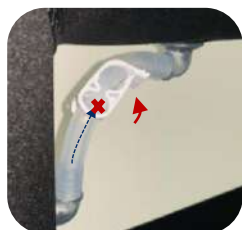


Lower ring for deflation

Upper ring (cap with non-return valve) for inflation



Clamp open: lets air through (position when inflating/deflating)



Clamp closed: does not let air through (position when structure is inflated)



Guying/ballasting loop



Pump (with “ Main Motor” button to start inflation and “ boost ” button to accelerate inflation)

Please refer to the pump's instructions for use



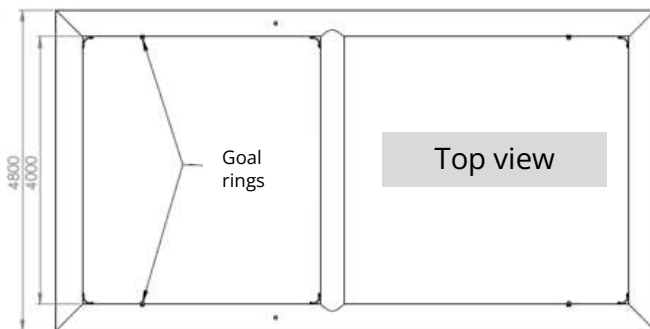
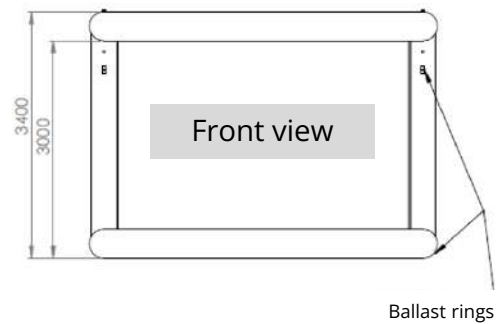
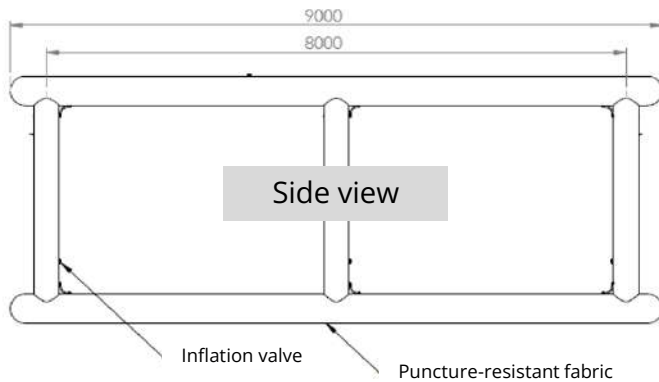
Do not open integration zip

IV - CHARACTERISTICS

	Standard Arenas		
Inside length	6 m	6 m	8 m
Inside width	3 m	4 m	4 m
Maximum height	3 m	5 m	3 m
Weight	33 kg	50 kg	55 kg

IV - CHARACTERISTICS

AIR DRONE ARENA 8x4x3



Valves & fasteners :

- Inflation valve : 15
- One pump : 22
- Eyelets : 6
- Ballast rings : 6
- Guy ropes : 4
- Goal rings : 4

V. INSTALLATION

- i** The installation time is **15-20 minutes** (depending on the model).
2 people are required for the installation.
220V/50Hz power supply(ies) to connect the pump(s).

Main steps of installation

- 1** Take the product out of its bag and spread it on the ground
- 2** Open the clamps and close the inflation valves
- 3** Inflate the frames
- 4** Inflate the feet

V. INSTALLATION

1. Take the structure out of its bag



2. Spread the structure on the ground

Prefer a clean space for unfolding, without elements that could cause damage (brambles, stakes, etc.). If needed, do not hesitate to use a protective tarp.

3. Open all the "clamps"

10

✓ Make sure all **clamps are fully opened**.

Each structure consists of several inflatable tubes connected by pipes that can be closed using clamps.

The whole forms the **"OnePump" system**. This system allows you to inflate the module at a single point (when the "clamps" are open), but also to block the spread of any potential pressure loss on one of the tubes (when the "clamps" are closed).



"Clamp" open
Allows air to pass through
(position for
inflation/deflation)

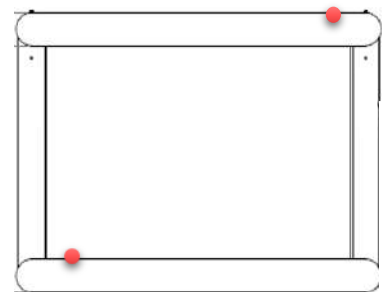
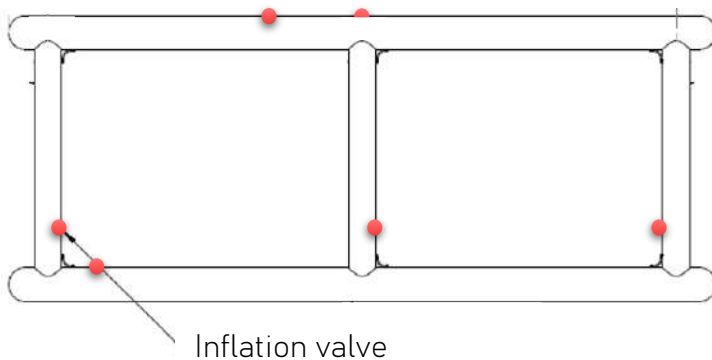
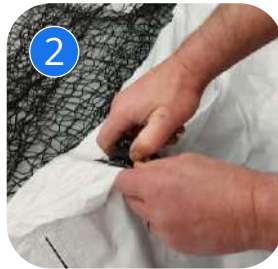


"Clamp" closed
Does not let air pass through
(position when the structure is
inflated)

V. INSTALLATION

4. Close all valves

- ✓ Remove the straps that connect the legs to the rest of the structure. (photo n°1).
- ✓ Ensure that all valves are securely closed before starting inflation. (photo n°2 and n°3).



11

5. Inflate the frames

The estimated inflation time is: **10 to 15 minutes (depending on the model)**

- ✓ Unscrew the top crown of a valve located on the upper frame of the structure (photo n°4) and connect the pump (photo n°5).



V. INSTALLATION

- ✓ Start inflation by pressing the "*main motor*" mode on the pump provided with the structure. Let the air spread for 1 to 2 minutes.

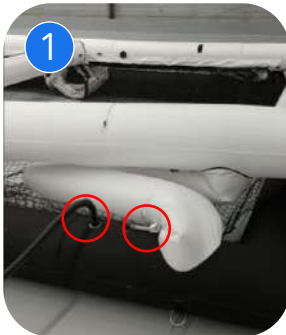


- ✓ You can press the "*boost*" mode on the pump to speed up inflation. Take a 10-minute break when the 4 tubes of the frame begin to form so that the pressure distributes evenly among the tubes.
- ✓ Turn off and unplug the pump once the structure is fully inflated.
- ✓ Repeat the same inflation process for the lower frame.

6. Inflate the legs

- ✓ Unscrew the upper crown of the cap located on the lower frame of the structure (*photo n°1*) and connect the pump. Make sure the clamps are open so air can circulate through the legs.

12

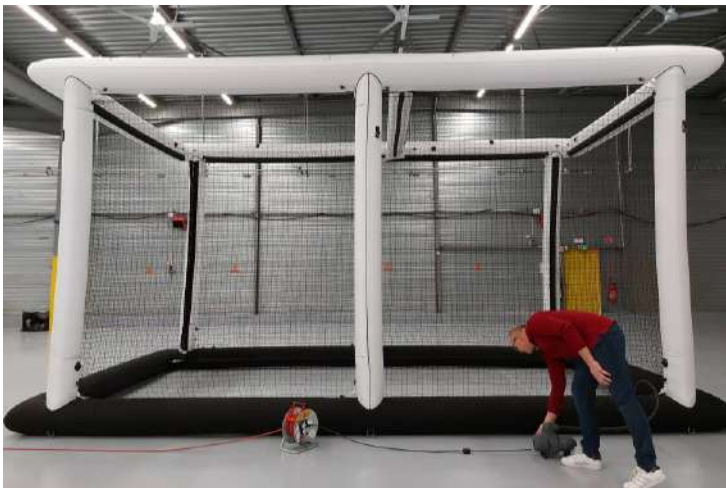


- ✓ Turn off the pump and close the cap once the structure is inflated.
- ✓ Close all clamps.

V. INSTALLATION

✓ Once the structure is inflated, you can turn off the pump and close the cap.

Once the inflation is complete, close all the clamps on the hoses.



13

7. Ballast (and guy) the structure

You can attach a ballast to each of the four rings located at the corners of the lower frame.

An additional ring, placed at the base of the central poles, allows for reinforcing the ballast if necessary.

Outdoors : guy the structure using the rings located on the poles.

VI. DISMANTLING

Disassembly time is **30 minutes**.

1. Deflate the structure

Do not use the pump to deflate the structure as this may damage it.

- ✓ Before deflating, open all the "clamps."
- ✓ First deflate the feet of the structure by unscrewing the lower crown of the plugs. Then open the plugs of the lower and upper frame.



14

WARNING:

Do not attempt to deflate the structure with the inflation pump!

You risk damaging the plastic inner tube that is inserted inside each tube.

2. Fold the structure

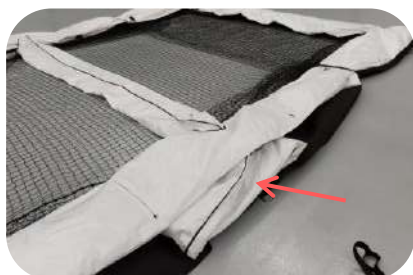
Do not jump or lie down on the structure to deflate it.

- Once the structure is spread out on the ground, reattach the Velcro straps that connect the feet to the rest of the structure.



VI. DISMANTLING

- ✓ Fold the feet and store them between the two frames.



- ✓ Fold the structure by successive symmetries. Fold the frame in half (*photo n°1*), then in half again (*photo n°2*), then roll the structure onto itself. (*photo n°3 and 4*).
- ✓ To properly expel the air from the tubes, flatten them.



15

VII. PROBLEM SOLVING

If you encounter any of the following problems, please follow the recommendations below :

- The non-return valve detaches from the valve during inflation ⇒ Simply close the cap to obtain a good sealing, this valve is a safety device.



- Eyelets that recess ⇒ Pass a clamp/ wire through the groove in the eyelet. Reposition the eyelet in front of the hole, then pull on both ends of the clamp at the same time so that the eyelet is positioned and protrudes over the PVC protection. Pull on the clamp on one side so that the eyelet moves back into position. The PVC protection must be fully inserted into the groove all around the eyelet.



16

- Inflation problem: the structure does not inflate, or inflates very slowly ⇒ check that the valves are closed properly.
- Inflation problem: the structure does not inflate ⇒ check that all clamps are open



- Leak on the structure ⇒ Clamp all components together to isolate the inner tube, which may be defective.
- Pull-out zipper teeth ⇒ Use a rigid object (wrench, stick, etc.) to align them.

To help you with small repairs, please refer to the repair guide, which can be consulted and downloaded from our website: <https://inflatable.michelin.com/en/after-sales-service-maintenance/repair-guide>



VIII.MAINTENANCE

1- Maintenance tips

Covers should be folded appropriately to maintain their watertight properties and prevent damage during storage.

You can wash the structure with a jet of water (avoid pressure washing). Use mild detergents: soap, dishwashing detergents, etc..

Wait until the structure is dry before putting it back in its carrying bag.

Inflation is guaranteed for 48 hours. Before each use, check the inflation.

A repair kit is included in your PACK. In the event of an inner tube leak, remove the tube from the textile sleeve, paying attention to the eyelets at the ends.

17

These "eyelet" fasteners take the form of transparent plastic caps.

Clean the leak area with rubbing alcohol and leave to dry for 1 minute. Finally, apply the self-adhesive patch, pulling the bladder taut. Press the patch back and forth until it adheres, then replace the bladder in the textile sleeve, fastening the ends securely.

To ensure that the repair is complete, perform an initial inflation by isolating the freshly repaired bladder from the rest of the structure.

We recommend regular visual inspection of your product; if you notice any signs of wear, please contact our after-sales service : sav@inflatable.michelin.com

IX. WARRANTY CONDITIONS

The MICHELIN Inflatable Solutions guarantee lasts for one (1) year.

This guarantee covers the following defects:

Leaks from a defective weld.

Valve detachment or valve leakage.

The guarantee does not cover damage resulting from incorrect assembly, incorrect use or resulting from an external cause such as :

Normal wear and tear of components.

Damage due to external aggression.

Damage caused by transport, malicious damage, poor maintenance and in particular cleaning with unsuitable products (please refer to our assembly instructions), falling trees, etc.

18

To benefit from the guarantee, please send us a photo of the product with the reference number or a copy of your invoice to:

commerce@inflatable.michelin.com

Please note that the commercial guarantee does not deprive you of the provisions relating to the guarantee against hidden defects (articles 1641 et seq. of the French Civil Code) or the legal guarantee of conformity (L211-1 et seq. of the French Consumer Code).

The guarantee is limited solely to the replacement of parts (excluding labour) recognised as defective by our company, without any compensation or damages being claimed for material or physical damage caused.

In the event of a return, the following information must appear on the packaging:

Name and address of the sender Name and address of the user Number of our delivery note, invoice, quotation, dimensions of the shelter, reasons for the return.



IX. WARRANTY CONDITIONS

When acting under the legal guarantee of conformity, the consumer :

- ✓ has a period of two years from the date of delivery of the goods in which to take action
- ✓ may choose between repairing or replacing the goods, subject to the cost conditions set out in article L. 211-9 of the Consumer Code
- ✓ is exempt from having to prove the existence of a lack of conformity in the goods during the six months following delivery of the goods. This period is extended to twenty-four months from 18 March 2016, except for second-hand goods.

The legal guarantee of conformity applies independently of any commercial guarantee that may have been granted.

Consumers may also decide to invoke the warranty against hidden defects in the goods sold, as defined in article 1641 of the French Civil Code. In this case, they may choose between rescission of the sale or a reduction in the sale price in accordance with article 1644 of the French Civil Code.

Article L. 211-4 of the French Consumer Code: "The seller is obliged to deliver goods in conformity with the contract and is liable for any lack of conformity existing at the time of delivery. He shall also be liable for any lack of conformity resulting from the packaging, the assembly instructions or the installation when the latter was made his responsibility under the contract or was carried out under his responsibility".

19