



MICHELIN INFLATABLE SOLUTIONS

Sport & Events

XL SHELTER

■ DESCRIPTION

Stand out from the crowd at your indoor and outdoor events with our XL inflatable shelter with an innovative design!

This event shelter from Michelin Inflation Solutions is modular, adaptable and expandable: each module is 50m² and its modules can be assembled together to give you a surface area of up to 150m².

It's quick to set up, and light enough to save you time at your events. Once deflated and folded, the giant shelter is very compact and easy to transport.

The XL shelter can be customised to suit your needs.



Light



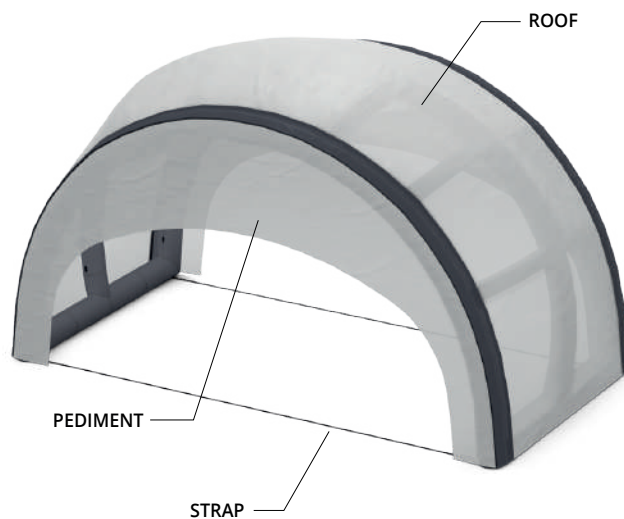
Quick installation



Modular



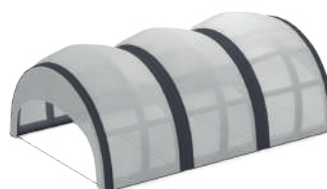
Compact



MICHELIN

TECHNICAL DATA

1 module seul	Exemple 3 modules Intégration longitudinale
---------------	--



Surface	50 m ²	150 m ²
Dimensions	10 l x 5 P x 5 H	10 l x 15 P x 5 H
Encombrement	120 x 80 x 80 cm	3 sacs de 120 x 80 x 80 cm
Poids	92 kg	276 kg
Temps d'installation	45 min	2 h 15 min

Delivered with : External covers + carry bag + pump + repair kit + rigging kit.
Available in options : Customisation, ballast solutions.

BALLAST

Wind density Drag coefficient
 Rho : 1,225 kg/m³ Cx : 1

	Ballast per foot (kg)					
	30km/h	40km/h	50km/h	60km/h	70km/h	80km/h
1 MODULE	56	100	156	224	304	399

These data should be multiplied by the number of modules assembled.

CONTACT

Because every project is unique, please contact our sales department to discuss and define your requirements.

Michelin Inflatable Solutions

5 avenue Jean Rostand
 78190 TRAPPES
 FRANCE

✉ commerce@inflatable.michelin.com
 🌐 <https://inflatable.michelin.com>

