



MICHELIN INFLATABLE SOLUTIONS

Sport & Events

XL SHELTER

DESCRIPTION

Stand out from the crowd at your indoor and outdoor events thanks to our large inflatable shelter with an innovative design!

This event shelter from Michelin Inflation Solutions is modular, adaptable and expandable: each module is 50m² and its modules can be assembled together to give you a surface area to suit your needs. It is quick to set up, light enough to save time at your events, and can be moved around even when inflated. Once deflated and folded, this giant shelter is very compact and easy to transport.



The large shelter can be customised to suit your needs.

Light



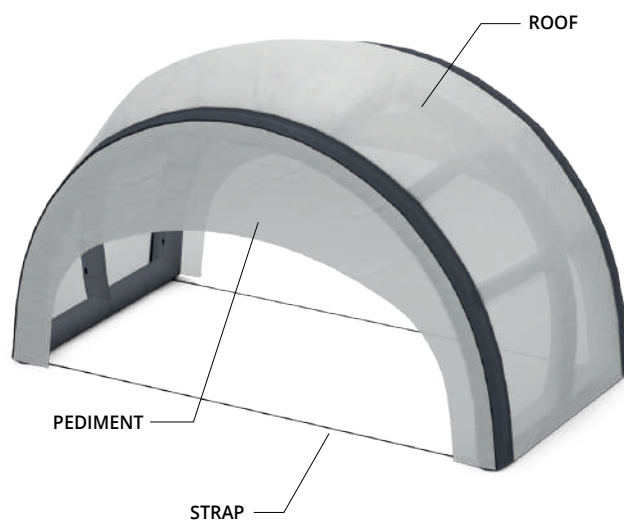
Quick
installation



Modular



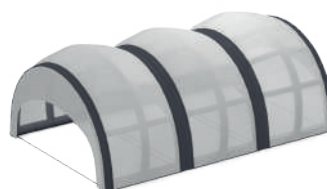
Compact



MICHELIN

TECHNICAL DATA

1 module seul	Exemple 3 modules Intégration longitudinale
---------------	--



Surface	50m ²	150m ²
Dimensions	10m l x 5m P x 5m H	10m l x 15m P x 5m H
Stockage	120cm x 80cm x 80cm	3 sacs de 120cm x 80cm x 80cm
Poids	92kg	276kg
Temps d'installation	45min	2h15min

Delivered with : External covers + carry bag + pump + repair kit + rigging kit.
Available in options : Customisation, ballast solutions.

BALLAST

	Ballast per foot (kg)	
	30km/h	40km/h
1 MODULE	56	100

These data should be multiplied by the number of modules assembled.

CONTACT

Because every project is unique, please contact our sales department to discuss and define your requirements.

Michelin Inflatable Solutions

5 avenue Jean Rostand
78190 TRAPPES
FRANCE

 commerce@inflatable.michelin.com
 <https://inflatable.michelin.com>

