

MICHELIN
INFLATABLE SOLUTIONS

AIR DRONE ARENA



INSTRUCTION MANUAL



This file contains all our recommendations to guide you in the use of your new Michelin Inflatable Solutions product.

We recommend that you read it very carefully the first time you use it, and refer to it if you have any doubts.

Our sales team remains at your disposal for any further information (**[e-mail: commerce@inflatable.michelin.com](mailto:commerce@inflatable.michelin.com)**).



CONTENTS

I. Checking the contents of the delivery	4
II. Legend	5
III. Features	6
IV. Installation	7
V. Dismantling	11
VI. Maintenance	13
VII. Warranty conditions	14



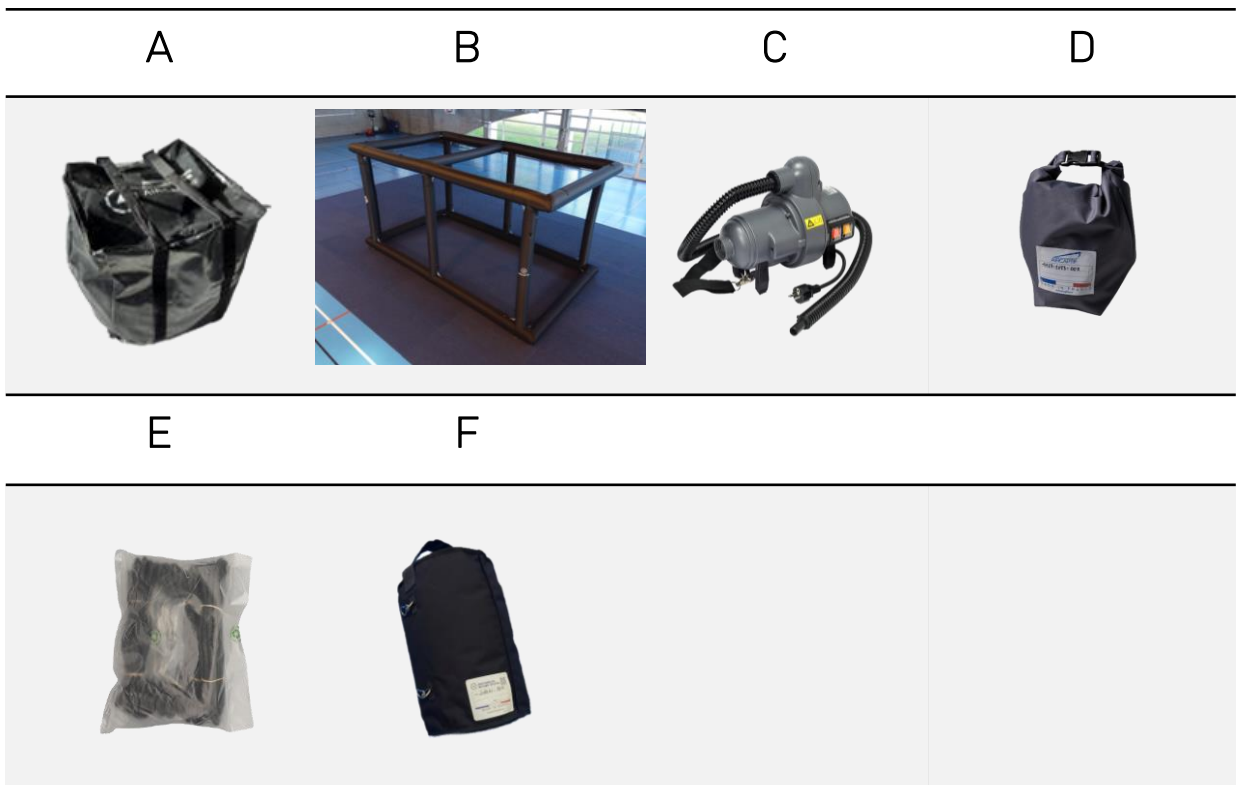
I - VERIFICATION OF CONTENTS ON DELIVERY

Elements included in a PACK :

- 1x carry bag (A)
- 1x inflatable structure with nets (B)
- 1x high flow pump (C)
- 1x repair kit (D)
- 6x guy ropes (E)

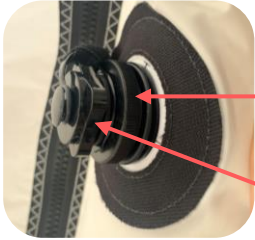
Optional elements:

- Ballast bags (F)



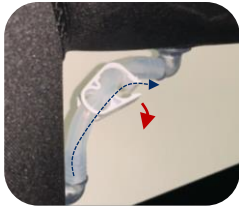


II - LEGEND

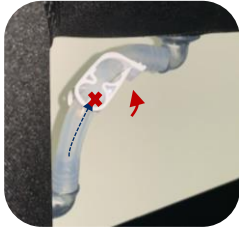


Lower ring for deflation

Upper ring (cap with non-return valve) for inflation



Clamp open: lets air through (position when inflating/deflating)



Clamp closed: does not let air through (position when structure is inflated)



Guying/ballasting loop



Pump (with “ Main Motor” button to start inflation and “ boost ” button to accelerate inflation)

Please refer to the pump's instructions for use



Do not open integration zip





III - CHARACTERISTICS

	Air Drone Arena
Inside length	6 m
Inside width	3 m
Maximum height	3 m
Weight	33 kg





IV - INSTALLATION

Installation takes around 15 minutes, including inflation.

1- Remove the shelter from its transport bag



2- Laying out the inflatable on the ground

The more the structure is spread out, the quicker it inflates.

The black frame should be the frame installed on the ground, while the white frame should be the upper frame.

7

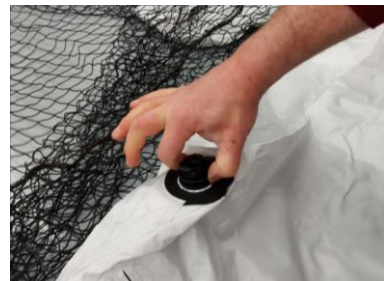
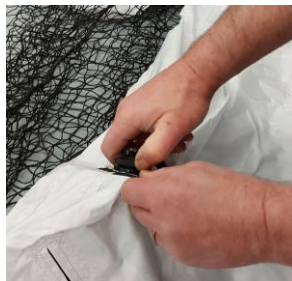




IV - INSTALLATION

3. Close all caps

- ✓ Remove the Velcro fasteners that connect the legs to the rest of the structure. (photo n°1).
- ✓ Make sure all the plugs are securely closed before you start inflating (photos 2 and 3).

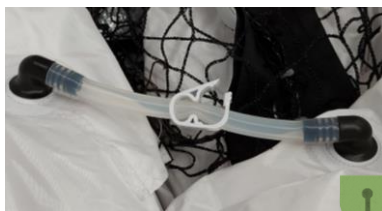


4. Open all the clamps on the pipes

- ✓ Make sure **all the clamps are open**.

Inside each structure are several inflatable bladders connected together by tubes that can be closed with clamps. Together they form the **"OnePump" system**.

This system allows you **to inflate the module at a single point** (when the clamps are open), but also **to block the propagation of any loss of pressure on one of the bladders** (when the clamps are closed).



"Clamp open" : allows air to pass through (inflate/deflate position)



"Clamp closed" : does not let air through (position when the structure is inflated)



IV - INSTALLATION

5. Inflate the structure's frames

- ✓ Unscrew the top ring of the plug located on the top frame (white frame) of the structure (*photo no. 1*) and connect the pump to it.



- ✓ Start inflation by pressing the pump's "main motor" mode (yellow button) and allow the air to spread for 1 to 2 minutes.
- ✓ Then press the pump's "boost" mode (red button) to continue inflation.



9

The structure is inflated when it is rigid. You can then turn off the pump.

Once inflation is complete, close all the clamps.



- ✓ Repeat the same operation for the lower frame (black frame).

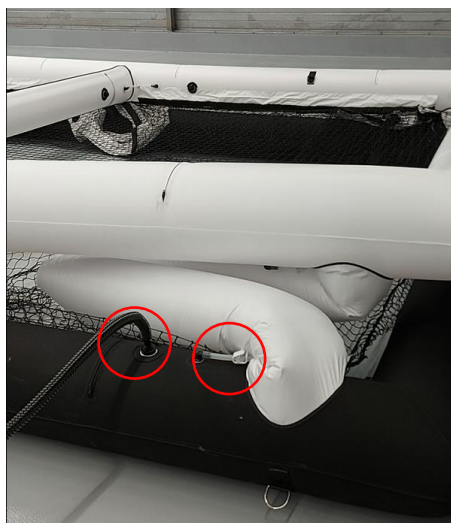




V - INSTALLATION

6. Inflate the feet of the structure

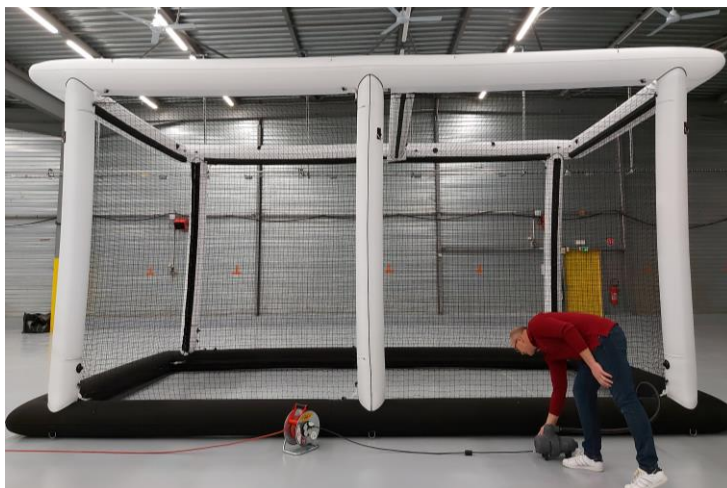
- ✓ Unscrew the top ring of the plug located on the lower frame (black frame) of the structure (*photo no. 1*) and connect the pump to it. Make sure that the clamps are open so that air can circulate in the feet.



10

- ✓ Once the structure is inflated, you can turn off the pump and close the cap.

Once inflation is complete, close all the clamps.





V - DISMANTLING

1. Deflating the structure

- ✓ Before deflating, open all the clamps.
- ✓ First deflate the legs of the structure by unscrewing the lower crown of the plugs. Then open the lower and upper frame plugs.



11

Do not attempt to deflate the structure with the inflation pump!

You risk damaging the plastic inner tube that is slipped inside each flange.



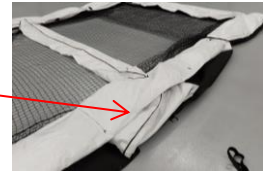
V - DISMANTLING

2. Folding

- ✓ Once the structure is on the ground, replace the Velcro fasteners that connect the legs to the rest of the structure.

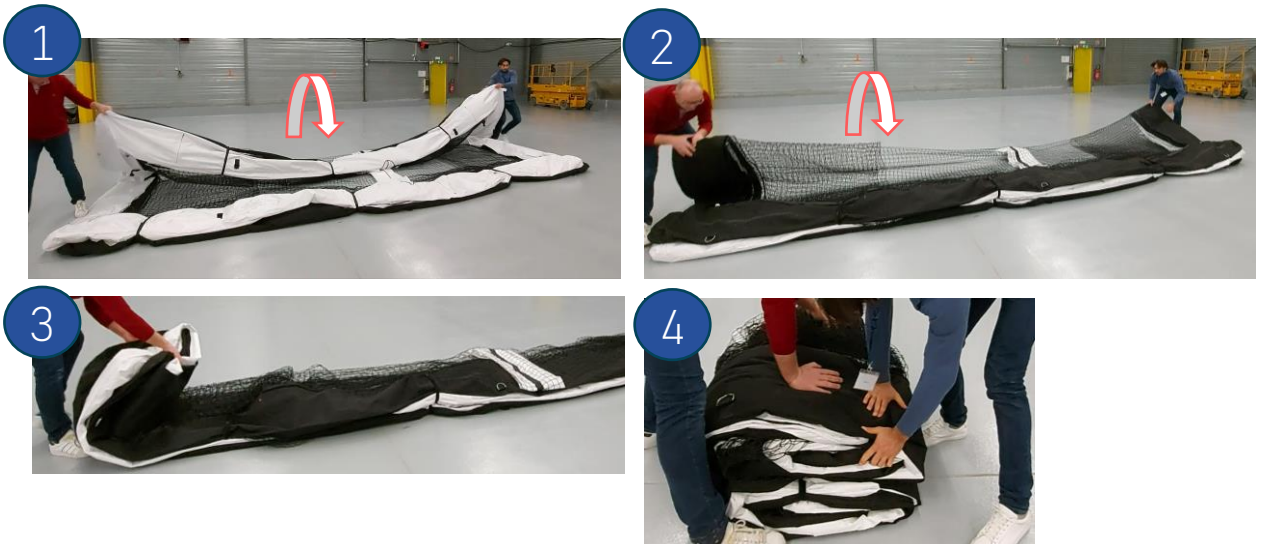


- ✓ Fold the feet and place them between the two frames.



- ✓ Fold the frame in successive symmetries. Fold the frame in half (photo no. 1), then in half again (photo no. 2) and roll up the structure on itself (photos no. 3 and 4). To let the air out of the tubes, flatten them.

12



- ✓ Finally, slide the folded structure into the bag.





VI – MAINTENANCE

1- Uses involving risks

- ✓ Do not use machinery or sharp equipment near the structure, as this could damage it.



- ✓ Do not use abrasive ballast (breeze block, stone, metal), as this may cause premature damage to the perimeter of the shelter.



- ✓ Do not bring the shelter into contact with flammable or corrosive products, as this may damage the structure.





VI – MAINTENANCE

2- Maintenance tips

Covers should be folded appropriately to maintain their watertight properties and prevent damage during storage.

You can hose down the shelter (avoid pressure washing). **Wait for the shelter to dry before storing it in the transport bag.**

Inflation is guaranteed for 48 hours. Before each use, check the inflation.

A repair kit is included in your PACK. In the event of an inner tube leak, remove the tube from the textile sleeve, paying attention to the eyelets at the ends.

14

These "eyelet" fasteners take the form of transparent plastic caps.

Clean the leak area with rubbing alcohol and leave to dry for 1 minute.

Finally, apply the self-adhesive patch, pulling the bladder taut. Press the patch back and forth until it adheres, then replace the bladder in the textile sleeve, fastening the ends securely.

To ensure that the repair is complete, perform an initial inflation by isolating the freshly repaired bladder from the rest of the structure.



VII - WARRANTY CONDITIONS

The MICHELIN Inflatable Solutions guarantee lasts for one (1) year.

This guarantee covers the following defects:

Leaks from a defective weld.

Valve detachment or valve leakage.

The guarantee does not cover damage resulting from incorrect assembly, incorrect use or resulting from an external cause such as :

Normal wear and tear of components.

Damage due to external aggression.

Damage caused by transport, malicious damage, poor maintenance and in particular cleaning with unsuitable products (please refer to our assembly instructions), falling trees, etc.

15

To benefit from the guarantee, please send us a photo of the product with the reference number or a copy of your invoice to:

commerce@inflatable.michelin.com

Please note that the commercial guarantee does not deprive you of the provisions relating to the guarantee against hidden defects (articles 1641 et seq. of the French Civil Code) or the legal guarantee of conformity (L211-1 et seq. of the French Consumer Code).

The guarantee is limited solely to the replacement of parts (excluding labour) recognised as defective by our company, without any compensation or damages being claimed for material or physical damage caused.

In the event of a return, the following information must appear on the packaging: Name and address of the sender Name and address of the user Number of our delivery note, invoice, quotation, dimensions of the shelter, reasons for the return.





VII - WARRANTY CONDITIONS

When acting under the legal guarantee of conformity, the consumer :

- ✓ has a period of two years from the date of delivery of the goods in which to take action
- ✓ may choose between repairing or replacing the goods, subject to the cost conditions set out in article L. 211-9 of the Consumer Code
- ✓ is exempt from having to prove the existence of a lack of conformity in the goods during the six months following delivery of the goods. This period is extended to twenty-four months from 18 March 2016, except for second-hand goods.

The legal guarantee of conformity applies independently of any commercial guarantee that may have been granted.

16

Consumers may also decide to invoke the warranty against hidden defects in the goods sold, as defined in article 1641 of the French Civil Code. In this case, they may choose between rescission of the sale or a reduction in the sale price in accordance with article 1644 of the French Civil Code.

Article L. 211-4 of the French Consumer Code: "The seller is obliged to deliver goods in conformity with the contract and is liable for any lack of conformity existing at the time of delivery. He shall also be liable for any lack of conformity resulting from the packaging, the assembly instructions or the installation when the latter was made his responsibility under the contract or was carried out under his responsibility".