

MICHELIN
INFLATABLE SOLUTIONS

***SWIMMING POOL
CONSTRUCTION SHELTER***



INSTRUCTION MANUAL



This file contains all our recommendations to guide you in the use of your new MICHELIN Inflatable Solutions product.

We recommend that you read it carefully the first time you use it, and refer to it if you have any doubts.

If you have any further questions, please do not hesitate to contact our sales team (**e-mail : commerce@inflatable.michelin.com**).



CONTENTS

I. Checking delivery contents	4
II. Legend	5
III. Features	6
IV. Installation	7
V. Dismantling	12
VI. Maintenance	14
VII. Warranty conditions	16



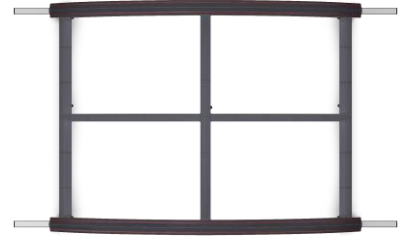
I - INSPECTION OF CONTENTS ON DELIVERY

Elements included in a KIT :

- 1x carrying bag (A)
- 1x inflatable frame (B)
- 1x all-weather cover per module (C)
- 2x side doors
- (D) 1x repair kit (E)
- 1x high-flow pump (F)

OPTIONAL elements :

- Ballast bags (G)



(B)



(C)

(D)



(A)



(E)



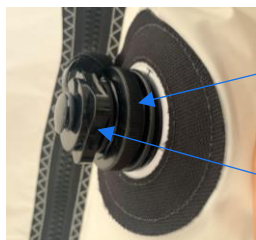
(F)



(G)



II - LEGEND



Lower crown, cap without non-return valve for deflation

Upper crown, plug with non-return valve for inflation



"Clamp" open: lets air through (position when inflating/deflating)

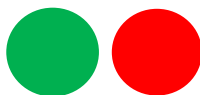


"Clamp closed: does not let air through (position when structure is inflated)

5



Zipper slider



The green dot indicates the start of a "zip" and the red dot its arrival.



III - CHARACTERISTICS

	Module 3m	Module 4m	Module 5m
Inside length	3	4	5
Inside width	5,50m	5,50m	5,50m
Weight	9kg	10kg	12kg
Overall dimensions	50x30x20cm	50x30x20cm	50x40x30cm
Materials	PU polyester + Nylon		



IV - INSTALLATION

Installation takes around 7 minutes, including inflation.

1. Remove the shelter (structure + covers + doors) from its transport bag



2. Laying out the inflatable on the ground

The more the structure is spread out, the faster it inflates. The structure can be spread out over the pool under construction.

7



3. Inflating the structure

Each structure is made up of several inflatable bladders connected together by tubes that can be closed with clamps. Together, they form the "OnePump" system.

This system allows you to inflate the module at a single point (when the clamps are open), but also to block the propagation of any loss of pressure on one of the tubes (when the clamps are closed).





IV - INSTALLATION

For fast, optimal inflation, open all the clamps. Once inflation is complete, close all the clamps.



Air passes



Air does not pass

Les structures sont équipées de bouchons vissés avec valves anti-retour d'air pour le gonflage.



8

Make sure that all the plugs are securely closed before you start inflating.

Unscrew the top crown of the cap and connect the pump to it.



Then wait about 5 minutes for the air inside to cool. Then finish inflating for at least 1 minute.



The structure is inflated when it is rigid. You can then turn off the pump and close all the clamps.





IV - INSTALLATION

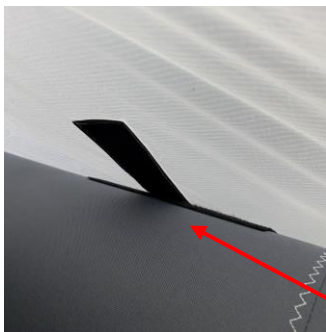
4. Fit the covers and side doors

Once the structure is inflated, the cover must be put in place using the zip fasteners.

On the structure, the zips are placed along the length of the arches.

On the covers (including the doors) the zips are also placed on the long sides.

To distinguish between the start and end of a zip, a color code has been introduced: a green dot indicates the start of the zip, while a red dot indicates the end.



Make sure the Velcro fasteners are positioned correctly to hold the covers in place.

✓ Install the side doors by zipping them up as for the covers.





IV - INSTALLATION

5. Ballast the structure

MICHELIN Inflatable Solutions offers an official ballasting solution: 40kg water ballast bags. When empty, these bags occupy a volume of just 2 litres and weigh around 1kg.

To ballast a kit, **12 bags of 40kg** are needed: 6 on each side, positioned at regular intervals. Other types of ballast (water cans, sandbags or saltbags) are acceptable.

However, make sure that the weights are arranged evenly and that their total mass is at least equivalent to the official solution proposed by Michelin Inflatable Solutions.

As regards positioning, **ballast the structure every 1.5 to 2m** all around the structure. Tongues (also known as flaps) are used to position the weights around the structure.

10





IV - INSTALLATION

6. Securing the structure

You can also add ballast to keep your shelter watertight and stable. A guying set, consisting of 3 pairs of thin clamps, accompanies each module we sell. These heavy-duty clamps enable you to attach the "lark heads" positioned at three points on each arch to a fixed securing point (tree, planting spike, table leg, vehicle, etc.).



7. Ventilation and heating

Two removable windows (fixed with Velcro) are positioned on each of the side doors. By removing a window, you can slide a technical duct through the enclosure, or run a ventilation/heating tube up to 30cm in diameter.

The MICHELIN Inflatable Solutions pool enclosure lets you control the working atmosphere under the enclosure (temperature, humidity, evacuation of harmful gases or fumes).





V – DISMANTLING

1. Remove the side doors and covers

- ✓ Remove the side doors by unzipping along the arches. Remove the covers, again unzipping along the arches.
- ✓ Then disconnect the inflatable modules by opening the zips.



12

2. Deflate the structure

- ✓ Make sure that the clamps on the tubes are open so that the air can circulate between the many tubes of the inflatable.
- ✓ Open the plugs by unscrewing their lower crown. This will bypass the 'non-return' valve that would block the air inside the bladders.



Do not use the inflation pump to deflate the structure.

You risk damaging the plastic inner tube that is slipped inside each flange to make it airtight.



V – DISMANTLING

3. Folding and storing the structure

- ✓ Fold the structure in successive symmetries (fold the frame in half, then again at 90° etc.). To let the air out of the tubes, flatten them.



- ✓ Finally, slide the folded structure into its bag. Then fold the covers and doors and do the same.

13



The cover can be kept on the inflatable for storage. The only problem is that folding the cover is trickier, as the air is harder to get out of the folds.



- ✓ Tie the straps on the bag to make it easier to carry.





VI – MAINTENANCE

1- Uses involving risks

- ✓ Do not use machinery or sharp equipment near the shelter, as this could damage it.



- ✓ Do not use abrasive ballast (breeze block, stone, metal), as this may cause premature damage to the perimeter of the shelter.



- ✓ Do not bring the shelter into contact with flammable or corrosive products, as this may damage the structure.





VI – MAINTENANCE

2- Maintenance tips

Covers should be folded appropriately to maintain their watertight properties and prevent damage during storage.

You can hose down the shelter (avoid pressure washing). **Wait for the shelter to dry before storing it in the transport bag.**

Inflation is guaranteed for 48 hours. Before each use, check the inflation.

A repair kit is included in your PACK. In the event of an inner tube leak, remove the tube from the textile sleeve, paying attention to the eyelets at the ends.

15

These "eyelet" fasteners take the form of transparent plastic caps.

Clean the leak area with rubbing alcohol and leave to dry for 1 minute. Finally, apply the self-adhesive patch, pulling the bladder taut. Press the patch back and forth until it adheres, then replace the bladder in the textile sleeve, fastening the ends securely.

To ensure that the repair is complete, perform an initial inflation by isolating the freshly repaired bladder from the rest of the structure.



VII - WARRANTY CONDITIONS

The MICHELIN Inflatable Solutions guarantee lasts for one (1) year.

This guarantee covers the following defects:

Leaks from a defective weld.

Valve detachment or valve leakage.

The guarantee does not cover damage resulting from incorrect assembly, incorrect use or resulting from an external cause such as :

Normal wear and tear of components.

Damage due to external aggression.

Damage caused by transport, malicious damage, poor maintenance and in particular cleaning with unsuitable products (please refer to our assembly instructions), falling trees, etc.

To benefit from the guarantee, please send us a photo of the product with the reference number or a copy of your invoice to:

commerce@inflatable.michelin.com

Please note that the commercial guarantee does not deprive you of the provisions relating to the guarantee against hidden defects (articles 1641 et seq. of the French Civil Code) or the legal guarantee of conformity (L211-1 et seq. of the French Consumer Code).

The guarantee is limited solely to the replacement of parts (excluding labour) recognised as defective by our company, without any compensation or damages being claimed for material or physical damage caused.

In the event of a return, the following information must appear on the packaging: Name and address of the sender Name and address of the user Number of our delivery note, invoice, quotation, dimensions of the shelter, reasons for the return.





VII - WARRANTY CONDITIONS

When acting under the legal guarantee of conformity, the consumer :

- ✓ has a period of two years from the date of delivery of the goods in which to take action
- ✓ may choose between repairing or replacing the goods, subject to the cost conditions set out in article L. 211-9 of the Consumer Code
- ✓ is exempt from having to prove the existence of a lack of conformity in the goods during the six months following delivery of the goods. This period is extended to twenty-four months from 18 March 2016, except for second-hand goods.

The legal guarantee of conformity applies independently of any commercial guarantee that may have been granted.

17

Consumers may also decide to invoke the warranty against hidden defects in the goods sold, as defined in article 1641 of the French Civil Code. In this case, they may choose between rescission of the sale or a reduction in the sale price in accordance with article 1644 of the French Civil Code.

Article L. 211-4 of the French Consumer Code: "The seller is obliged to deliver goods in conformity with the contract and is liable for any lack of conformity existing at the time of delivery. He shall also be liable for any lack of conformity resulting from the packaging, the assembly instructions or the installation when the latter was made his responsibility under the contract or was carried out under his responsibility".

