

MICHELIN

INFLATABLE SOLUTIONS

MULTISPORT FIELD

—

INSTRUCTION MANUAL

This file contains all our recommendations to guide you in the use of your new MICHELIN Inflatable Solutions product.

We recommend that you read it carefully before using your product for the first time, and refer to it if you have any doubts.

Our sales team will be happy to provide you with any further information you may require (e-mail: commerce@inflatable.michelin.com).

CONTENTS

I. PRECAUTIONS FOR USE	4
II. CHECKING THE CONTENTS OF THE DELIVERY	6
III. LEGEND	7
IV. CHARACTERISTICS	8
V. INSTALLATION	9
VI. DISMANTLING	16
VII. PROBLEM SOLVING	17
VIII. MAINTENANCE	18
IX. WARRANTY CONDITIONS	19



I. PRECAUTIONS FOR USE

1. Uses involving risks

- ✓ Do not use machinery or cutting equipment near the structure, as this could damage it.



- ✓ Do not use abrasive ballast (breeze block, stone, metal), as this may cause premature damage to the perimeter of the shelter.



- ✓ Do not bring the shelter into contact with flammable or corrosive products, as this may damage the structure.



- ✓ It is strictly forbidden to smoke or install a heat source under or near the structures.



2. Limited conditions of use

- ✓ Dismantle the structure if the wind speed exceeds 60km/h. The structure must be operated with the doors and covers closed. Risk of the covers tearing in strong winds. Respect the weight and distribution of ballast recommended.
- ✓ In the case of snowfall, it is necessary to remove the snow from the top of the structure. If this is not possible, the structure must be dismantled.



I. PRECAUTIONS FOR USE

- ✓ Your product is inflatable, so there is a risk that a bladder in your structure could leak. In this case, evacuate the people present under the structure, dismantle the structure and contact the after-sales service: commerce@inflatable.michelin.com.
- ✓ A systematic check is recommended when assembling your structure. If you notice any damage, dismantle the structure and contact the product distributor.
- ✓ Re-inflate regularly and after any major change in temperature.
- ✓ **In the case of operation in an events area** that qualifies as an ERP (establishment open to the public), refer to the standards of the country/commune (CTS type) for the rules applicable to the operator.

II. CHECKING THE CONTENTS OF THE DELIVERY

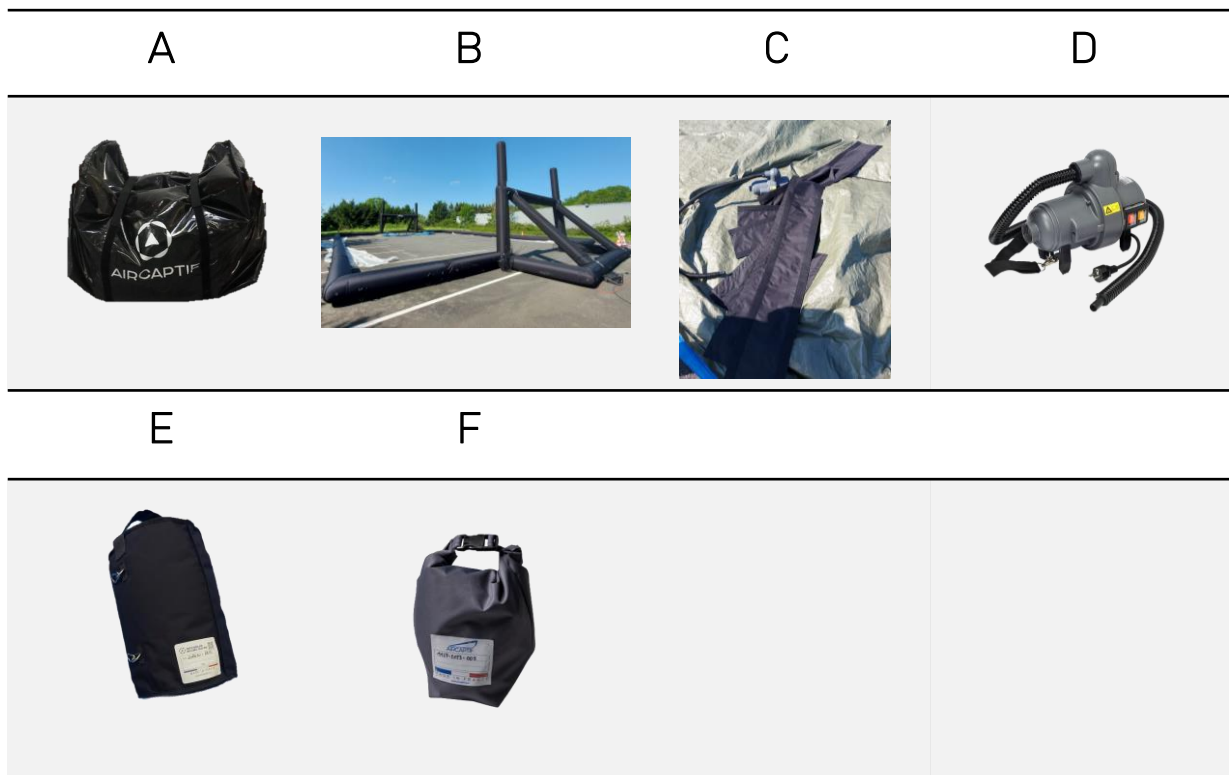
Items included in a KIT :

- 2x carry bags **(A)**
- 1x inflatable structure (2 goals + 4 corners + 2 15m modules) **(B)**
- 8x connecting flap **(C)**
- 4x high flow pumps **(D)**
- 8x ballast bags **(E)**

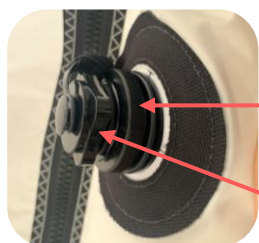
OPTIONAL items :

- 1x repair kit **(F)**

6

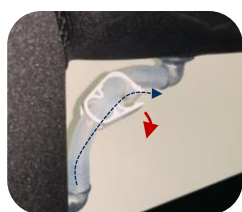


III. LEGEND

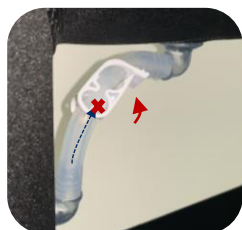


Lower ring for deflation

Upper ring (cap with non-return valve) for inflation



'Clamp open: lets air through (position when inflating/deflating)



'Clamp closed: does not let air through (position when structure is inflated)



Guy ring / ballast ring



Pump (with ' Main Motor' button to start inflation and ' boost ' button to speed up inflation) Please refer to the pump's instructions for use.



Do not open the integration zip .

IV. CHARACTERISTICS

MULTISPORT FIELD	
Interior dimensions	19 x 14 m
Exterior dimensions	24 x 15 m
Maximum height	4,6 m
Weight	104 kg (2 sacs de 52kg)

V. INSTALLATION

- i** Installation takes **1 hour**.
A minimum of 2 people are required for installation.
220V/50Hz power supply(s) to connect the pump(s).

The main installation stages

- 1 THE GOALS
- 2 THE ANGLES
- 3 THE 15M MODULES
- 4 INSTALL THE CONNECTING FLAPS
- 5 BALLAST AND BRACE THE STRUCTURE

V. INSTALLATION

THE GOALS

1. Take the structure out of the bag

2. Spread the structure on the ground

✓ To position the structure on the ground in the right direction, each structure has a 'UP' which must be placed on top. UPs are only visible if there is no cover, so if your product has a cover, the cover must be placed on top when it is installed on the ground.



Choose a clean area for unfolding, free from elements that could cause damage (brambles, stakes, etc). If necessary, don't hesitate to use a protective tarpaulin.

- ✓ Spread the goals out on the ground.
- ✓ The two rugby posts should face the same way.

10

3. Open all the clamps

- ✓ Make sure all the clamps are open.

Each structure is made up of several inflatable bladders connected together by tubes that can be closed using clamps. Together they form the 'OnePump' system.

This system allows you to inflate the module at a single point (when the clamps are open), but also to block the propagation of any loss of pressure on one of the bladders (when the clamps are closed).



"Clamp open"
Lets air through
(inflation/deflation position)



"Clamp closed"
Does not let air through (position
when the structure is inflated)

V. INSTALLATION

4. Close all the caps

- ✓ Close all the plugs on the structure.



5. Inflating the goal

- ✓ Unscrew the upper ring from a plug on the structure and connect the pump to it.



- ✓ Start inflation by pressing the pump's 'main motor' mode (yellow button) and allow the air to spread for 1 to 2 minutes.
- ✓ Then press the pump's 'boost' mode (red button) to speed up inflation.
- ✓ Leave the structure to inflate for around ten minutes.
- ✓ Then accompany the structure to help it stand up.
- ✓ Switch off and remove the pump, then close the cap.



11



V. INSTALLATION

THE ANGLES

1. **Take the inflatable out of its bag**
2. **Unfold and lay the inflatable on the ground**



3. **Close all the caps**

- ✓ Close all the plugs on the structure.



4. **Inflate the corners**

- ✓ Unscrew the top ring of a plug on a corner and connect the pump to it.
- ✓ Stop the pump and close the plug once the corner is sufficiently rigid.
- ✓ Repeat this operation for the other 3 corners.



V. INSTALLATION

5. Install the connecting flaps (between corners and goals)

- ✓ Place the corners facing the goals so that they can be connected.



- ✓ Position the connecting flaps on the velcro fasteners on the structures, then wrap the connecting flap around them to join them together.



V. INSTALLATION

15m MODULES

1. Remove the module from its transport bag
2. Unfold and lay the inflatable on the ground



3. Close all the caps

✓ Close all the caps on the structure.



4. Inflate the modules

- ✓ Unscrew the top ring of one of the caps on the module and connect the pump to it.
- ✓ Once the module is sufficiently inflated, stop the pump and close the cap.



V. INSTALLATION

5. Install the connecting flaps (between corners and goals)

- ✓ Place the 15m modules facing the corners.
- ✓ Install the connecting flap using the Velcro fasteners provided.

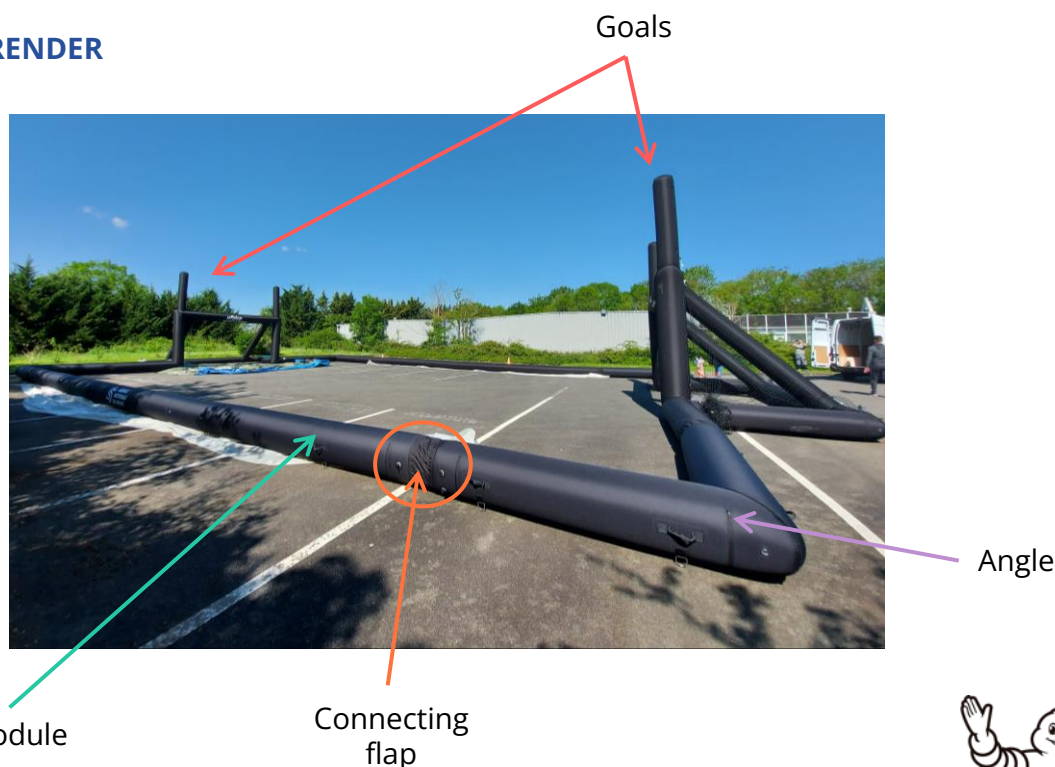


6. Ballast and brace the structure

15

The structure must be ballasted in accordance with the recommended weights and distributions.

FINAL RENDER



15m Module

Connecting flap



VI. DISMANTLING

1. Remove accessories and fixings

- ✓ Remove the connecting flaps between the various elements.

2. Deflate the structure

CAUTION: Do not use the pump to deflate the structure, as this could damage it.

- ✓ Open all the lower rings of the caps and allow each structure to deflate on its own.

3. Fold and store the structure

CAUTION ; Do not jump or lie on the structure to deflate it.

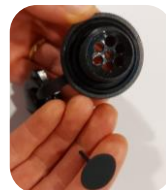
Always use the original bags.

- ✓ Fold each structure onto itself.
- ✓ Put the structure back in its bag.

VII. PROBLEM SOLVING

If you encounter any of the following problems, please follow the recommendations below :

- The non-return valve detaches from the valve during inflation ⇒ Simply close the cap to obtain a good sealing, this valve is a safety device.



- Eyelets that recess ⇒ Pass a clamp/ wire through the groove in the eyelet. Reposition the eyelet in front of the hole, then pull on both ends of the clamp at the same time so that the eyelet is positioned and protrudes over the PVC protection. Pull on the clamp on one side so that the eyelet moves back into position. The PVC protection must be fully inserted into the groove all around the eyelet.



17

- Inflation problem: the structure does not inflate, or inflates very slowly ⇒ check that the valves are closed properly.
- Inflation problem: the structure does not inflate ⇒ check that all clamps are open



- Leak on the structure ⇒ Clamp all components together to isolate the inner tube, which may be defective.
- Pull-out zipper teeth ⇒ Use a rigid object (wrench, stick, etc.) to align them.

To help you with small repairs, please refer to the repair guide, which can be consulted and downloaded from our website: <https://inflatable.michelin.com/en/after-sales-service-maintenance/repair-guide>

VIII.MAINTENANCE

1- Maintenance tips

Covers should be folded appropriately to maintain their watertight properties and prevent damage during storage.

You can wash the structure with a jet of water (avoid pressure washing). Use mild detergents: soap, dishwashing detergents, etc..

Wait for the structure to dry before storing it in its carry bag.

Inflation is guaranteed for 48 hours. Before each use, check the inflation.

A repair kit is included in your PACK. In the event of an inner tube leak, remove the tube from the textile sleeve, paying attention to the eyelets at the ends.

18

These "eyelet" fasteners take the form of transparent plastic caps.

Clean the leak area with rubbing alcohol and leave to dry for 1 minute. Finally, apply the self-adhesive patch, pulling the bladder taut. Press the patch back and forth until it adheres, then replace the bladder in the textile sleeve, fastening the ends securely.

To ensure that the repair is complete, perform an initial inflation by isolating the freshly repaired bladder from the rest of the structure.

We recommend regular visual inspection of your product; if you notice any signs of wear, please contact our after-sales service (contact details on page 2).

IX. WARRANTY CONDITIONS

The MICHELIN Inflatable Solutions guarantee lasts for one (1) year.

This guarantee covers the following defects:

Leaks from a defective weld.

Valve detachment or valve leakage.

The guarantee does not cover damage resulting from incorrect assembly, incorrect use or resulting from an external cause such as :

Normal wear and tear of components.

Damage due to external aggression.

Damage caused by transport, malicious damage, poor maintenance and in particular cleaning with unsuitable products (please refer to our assembly instructions), falling trees, etc.

19

To benefit from the guarantee, please send us a photo of the product with the reference number or a copy of your invoice to:

commerce@inflatable.michelin.com

Please note that the commercial guarantee does not deprive you of the provisions relating to the guarantee against hidden defects (articles 1641 et seq. of the French Civil Code) or the legal guarantee of conformity (L211-1 et seq. of the French Consumer Code).

The guarantee is limited solely to the replacement of parts (excluding labour) recognised as defective by our company, without any compensation or damages being claimed for material or physical damage caused.

In the event of a return, the following information must appear on the packaging:

Name and address of the sender
Name and address of the user
Number of our delivery note, invoice, quotation, dimensions of the shelter, reasons for the return.



IX. WARRANTY CONDITIONS

When acting under the legal guarantee of conformity, the consumer :

- ✓ has a period of two years from the date of delivery of the goods in which to take action
- ✓ may choose between repairing or replacing the goods, subject to the cost conditions set out in article L. 211-9 of the Consumer Code
- ✓ is exempt from having to prove the existence of a lack of conformity in the goods during the six months following delivery of the goods. This period is extended to twenty-four months from 18 March 2016, except for second-hand goods.

The legal guarantee of conformity applies independently of any commercial guarantee that may have been granted.

Consumers may also decide to invoke the warranty against hidden defects in the goods sold, as defined in article 1641 of the French Civil Code. In this case, they may choose between rescission of the sale or a reduction in the sale price in accordance with article 1644 of the French Civil Code.

20

Article L. 211-4 of the French Consumer Code: "The seller is obliged to deliver goods in conformity with the contract and is liable for any lack of conformity existing at the time of delivery. He shall also be liable for any lack of conformity resulting from the packaging, the assembly instructions or the installation when the latter was made his responsibility under the contract or was carried out under his responsibility".

