

# SUMMER PASSENGER CAR TYRE

## Kormoran Summer3

Perfect for dry and wet roads,  
commuting or city cruising

For passenger cars.

# RENEWED



City cars



Compact cars



Saloon cars



People carriers



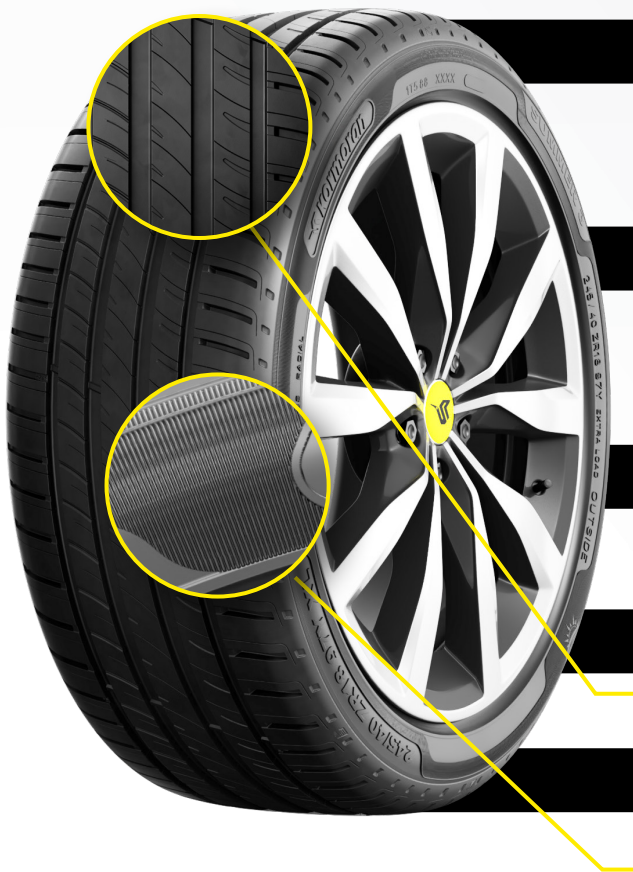
High cylinders



SUV, crossovers



Light trucks



### ENHANCED WEAR PERFORMANCE

- Although tread depth is reduced, usage of renewed tread compound results with 10% better mileage (wear) compared to previous generation summer range „A“ grading on wet, the best possible grading

### ROLLING RESISTANCE & ENVIRONMENT

- Improved rolling resistance for fuel consumption reduction
- „C“ rolling resistance grading
- Excellent value for money thanks to the improved mileage and lower fuel consumption

### WET GRIP

- Better wet grip performance for safety improvement
- „C“ and „B“ wet grip grading

### LONG LASTING WET (LLP WET)

- Very good wet grip for worn tyre, thanks to full depth grooves, important improvement compared to previous generation

### NEW RANGE TO SERVE CUSTOMER NEEDS

- New dynamical tread design and renewed sidewall look
- Improved sidewall rigidity gives better handling and endurance
- Dynamical tread wear balancing indicator, for the easy followup of the right tyre usage

#### Labelling

C	B-C	B	69-72 dB

Benefit from our tyres designed and made in Europe!

Fuel efficiency (from A to E).

Grip on wet road (from A to E).

External rolling noise class (from A to C).

External rolling noise measured value (decibel).

Information correct at the date of publication.