

# **NEW MICHELIN X® WORKS™ D2**

**LONGEVITY,  
DURABILITY,  
HIGH SAFETY**

**EXTREMELY ROBUST ON SITE AND  
LONG LASTING ON ROAD**



**CUT OPERATING COSTS**

Up To **10%** Of Additional Mileage<sup>(1)</sup>

**325/95R24**



**X® WORKS™**

DESIGNED FOR MIXED  
USAGE ON/OFF ROAD  
APPLICATIONS  
FOR MEDIUM AND  
SHORT CYCLES

**DRIVE  
AXLE**



**M+S**



# **MICHELIN.**

**OPTIMISED PERFORMANCE PRODUCT  
FOR YOUR DAILY BUSINESS**

(1) +10% for 325/95R24 MICHELIN X® WORKS™ D2 Z vs. predecessor product XWORKS XD based on Michelin AIM Internal performance assessment and field placement results have been tested in Oman market on drive axles between Jul'17 and Nov'18



**MICHELIN**

# MICHELIN X® WORKS™ D2



## BUSINESS EFFICIENCY

### CUT OPERATING COSTS

#### Up to 10% additional mileage\*

- Innovative and optimized tread design to maximize tyre mileage performance
  - New sculpture design for pattern to protect against center wear
  - Improved wear profile in center



## EXTRA ROBUSTNESS

### REDUCED BREAKDOWN

#### New innovative crown architecture design

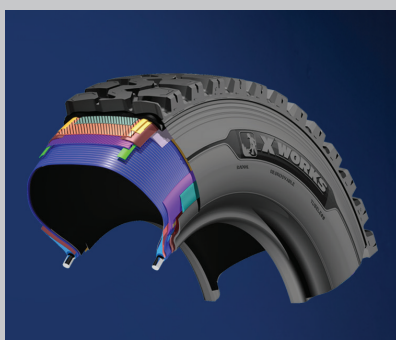
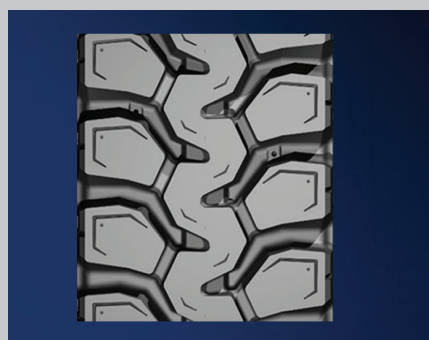
- New sculpture pattern and tread band materials
- Proven design used and best in class:
  - Strong casing and crown belts
  - Special bead design and high casing turn-up



## SAFETY

### ALWAYS TRANSPORT SAFELY WHATEVER THE ROADS CONDITIONS

- Designed to operate in severe mixed on/off working conditions
- High level of manufacturing quality



## MICHELIN TECHNICAL TRUCK TYRE DATA

TREAD PATTERN AND DIMENSION	TYRE TYPE	LOAD INDEX/ SPEED SYMBOL	SECTION WIDTH (MM)	FREE DIAMETER (MM)	LADEN RADIUS (MM)	MINIMUM DUAL SPACING (MM)	ADVISED RIMS (INCH)	S=SINGLE FITMENT	PRESSURE (BARS - PSI) LOAD PER AXLE
								T=TWIN	8.5/123
325/95R24 X WORKS D2	Tubeless **	162/160 K (164/160 G)	312	1229	569	354	8.5 - 9.0	S	9500Kg
								T	18000Kg



## REGROOVING INFORMATION

TREAD PATTERN AND DIMENSION	REGROOVING DEPTH ***	APPROXIMATE REGROOVING WIDTH	SUGGESTED BLADE
325/95R24 X WORKS D2	4 mm	8 to 10 mm	R3/R4

## REGROOVING PATTERN



## RETREADABLE WITH MICHELIN RECAMIC

\* +10% for 325/95R24 MICHELIN X® WORKS™ D2 Z vs. predecessor product X WORKS XD based on Michelin AIM Internal performance assessment and field placement results have been tested in Oman market on drive axes between Jul'17 and Nov'18

\*\*May be used with tube

\*\*\*The depth of the regroove should always be checked before regrooving

**Warning:** MICHELIN truck tyres are designed and optimised for specific condition of usage which can be found in the MICHELIN Truck and Bus Tyre Technical Data Book. It is therefore, not advisable to use the product in condition of use outside the parameters of which it was designed for. Operations outside these parameters are identified as abnormal usage and are not eligible for warranty consideration. Serious or fatal injury may result from tyre failure as a result of operating outside the tyre intended condition of use. Refer to MICHELIN Truck and Bus Tyre Technical Data Book, MICHELIN Truck and Bus Tyre Service Manual or consult your MICHELIN Truck Tyre professional for recommendations and procedures.