

New MICHELIN XDR3

The new 40.00 R 57 and 53/80 R 63 MICHELIN XDR3 tires have been designed for rigid dump trucks operating in surface mines.

One of the main challenges facing mine operators today is to reduce the cost per ton by improving operational efficiency, while still ensuring safety for all within the workplace, and thus increasing profitability.

The new MICHELIN XDR3 responds to the needs of mine operators by incorporating three key innovations, which together increase tire life by a minimum of 10 per cent compared to its predecessor, the MICHELIN XDR 2.



- **A revolutionary new tread pattern**

Compared with its predecessor this new tread pattern offers multiple benefits. It offers better endurance due to improved heat dissipation capabilities – 8°C cooler in the tread area. A greater volume of tread rubber is in contact with the ground which improves wear and ensures better load distribution throughout the contact patch due to a lower contact pressure. Finally, interlocking shoulder blocks resist excessive movement during cornering and further reduce tire wear (see illustration below).

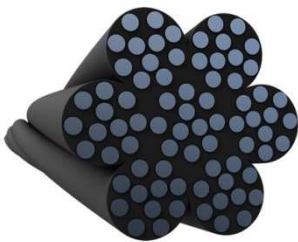


- **Four innovative rubber compounds (MB4, MB, MC4, MC)**

An exclusive new mixing process ensures a more uniform composition of rubber compounds and a superior level of carbon black dispersion that increases wear resistance. Each unique compound offers specific performance characteristics adapted to site conditions and usage, from high wear resistance to high thermal capacity for speed.

- **Corrosion isolating steel cables**

The high-strength steel cables used in the tire's casing are 10 per cent stronger than in the XDR2 and are encapsulated in rubber to prevent the spread of corrosion within the casing, which extends the life of the tire (see illustration below).



The MICHELIN XDR3 is also MEMS¹ ready. This means that it is possible to quickly and easily install state-of-the-art data sensors to capture and transmit temperature and pressure information in real time.

Michelin's R&D teams spent more than six years developing this new tire to ensure that it fully meets the expectations and needs of customers and during the extensive testing process more than 25 million kilometres were travelled, which is the equivalent of circling the earth 625 times.

The 40.00 R 57 MICHELIN XDR3 will be available from September 2016 and the 53/80 R 63 from January 2017.

Ends...

¹Michelin Earthmover Management System

Michelin, the leading tire company, is dedicated to enhancing its clients' mobility, sustainably; designing and distributing the most suitable tires, services and solutions for its clients' needs; providing digital services, maps and guides to help enrich trips and travels and make them unique experiences; and developing high-technology materials that serve the mobility industry. Headquartered in Clermont-Ferrand, France, Michelin is present in 170 countries, has 111,700 employees and operates 68 production facilities in 17 countries which together produced 184 million tires in 2015. (www.michelin.com)