



THE MICHELIN TRACKER, THE NEW ALL-TERRAIN MOTORCYCLE TYRE FOR OFF-ROAD ENTHUSIASTS

The **MICHELIN Tracker** takes its inspiration directly from tyres used in topflight motorsport and is engineered to address the needs of the growing number of riders who are looking for a reliable product that allows them to enjoy their off-road forays to the full.

To cover the requirements of amateur competitors, as well as those who use their bike for practice or leisure purposes, it is designed to cover a particularly broad spectrum of terrains. Thanks to its new tread pattern design, its resilience and the outstanding grip it delivers, the **MICHELIN Tracker** is perfectly suited to riding on sand, mud and dirt.

It is approved for road use, too, making it the ideal fitment for road legal, enduro and trail bikes like the Yamaha WR-F 450 and the Suzuki DR-Z 400.

The **MICHELIN Tracker's** strength, performance, versatility and affordable price tag are sure to appeal to a high number of off-road enthusiasts, and the technologies it packs stand to win over the most exacting bikers.

Careful attention has notably been paid to its tread pattern and crown which has been reinforced to shrug off the knocks associated with off-road riding.

The design of the **MICHELIN Tracker's** innovative tread pattern ensures outstanding traction and braking performance in even the toughest conditions. The tie bars that connect the blocks provide added protection and upgraded resistance to impact, while the new tyre's two-ply construction combines reduced weight with superior ride comfort and directional precision.

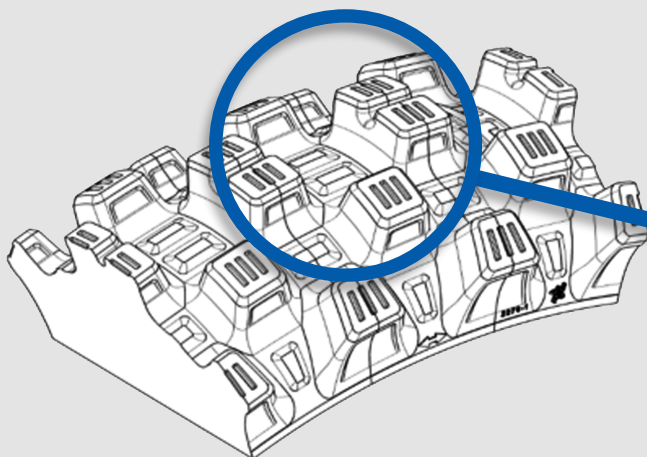
Last but not least, for extra peace of mind for riders who like to stray off the beaten track, MICHELIN Bib Mousse inserts are available in a choice of four sizes (M15, M18, M22 and M199) for the new MICHELIN Tracker.



TECHNICAL INFORMATION

► New tread pattern

- Optimised number of tread blocks/geometry ratio



The sharp edges on each tread block work together to deliver superior traction and braking performance

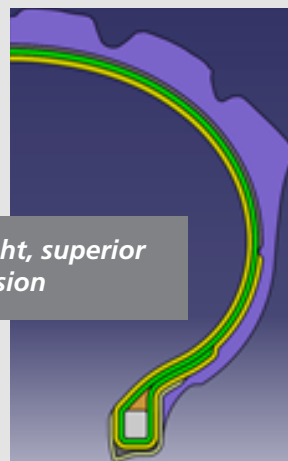


Ditch radius selected to improve resistance to wear



The 36-block tread pattern optimises handling performance and resistance to wear, and ensures the versatility to cover a wide range of types of ground

Two-ply crown for low weight, superior ride comfort and added precision



► Available sizes **MICHELIN TRACKER**

	SIZE	AVAILABILITY (EUROPE)	AVAILABILITY (OUTSIDE OF EUROPE)
FRONT	80/100 - 21 51R TT	01/2019	02/2019
	90/90 - 21 54R TT	06/2019	07/2019
REAR	100/100 - 18 59R TT	03/2019	04/2019
	110/100 - 18 64R TT	03/2019	04/2019
	120/90 - 18 65R TT	03/2019	04/2019
	140/80 - 18 70R TT	07/2019	08/2019
	100/90 - 19 57R TT	03/2019	04/2019
	110/90 - 19 62R TT	01/2019	02/2019
	120/80 - 19 63R TT	04/2019	05/2019

► BIB Mousse **MICHELIN TRACKER**

	SIZE	RECOMMENDED BIB MOUSSE
FRONT	80/100 - 21 51R TT	M15
	90/90 - 21 54R TT	
REAR	100/100 - 18 59R TT	/
	110/100 - 18 64R TT	M18
	120/90 - 18 65R TT	M18
	140/80 - 18 70R TT	M18
	100/90 - 19 57R TT	M22
	110/90 - 19 62R TT	M199
	120/80 - 19 63R TT	M199

► **MICHELIN TRACKER** innertubes

	SIZE	RECOMMENDED INNERTUBE
FRONT	80/100 - 21 51R TT	21UHD 21MD 21MDR
	90/90 - 21 54R TT	
AREAR	100/100 - 18 59R TT	18UHD MEDIUM 18MFR 18MGR
	110/100 - 18 64R TT	
	120/90 - 18 65R TT	
	140/80 - 18 70R TT	18UHD
	100/90 - 19 57R TT	19UHD 19MER
	110/90 - 19 62R TT	19UHD 19MFR
	120/80 - 19 63R TT	19UHD 19MER



MICHELIN LANDMARK DATES AND NUMBERS

Founded

1889

Production facilities

121 factories in 17 countries

Staff

117,400 worldwide

Research and Development

**more than 6,000 R&D staff working on three continents,
North America, Europe and Asia**

R&D budget 2018

€648 million

Net sales 2018

€22,028 billion

Michelin's mission is to promote the sustainable mobility of people and goods. The Michelin Group designs, manufactures and markets tyres for all types of vehicle. Michelin also markets a range of innovative digital services, including vehicle fleet management systems and tools designed to aid mobility. In addition, it publishes a portfolio of travel, hotel and restaurant guides, as well as road maps and atlases. Based in Clermont-Ferrand, France, the Group is active in 170 countries, employs a staff of 117,400 worldwide and operates 121 production facilities in 17 countries. The Group has Research and Development Technology Centres in Europe, North America and Asia. (www.michelin.com)

Media contact:

Florence Marchand: +33 (0) 6 08 01 16 35

florence.marchand@michelin.com

