



**MICHELIN  
POWER GP**

**MICHELIN  
POWER 5**



**MICHELIN  
POWER CUP 2**



**MICHELIN  
POWER SLICK 2**



## **THE NEW 2020 MICHELIN POWER MOTOR CYCLE TYRE RANGE**

PRESS KIT -JUNE 2020

**Media contact:** Florence Marchand / +33 6 08 01 16 35



# CONTENTS

---

IN SUMMARY

Page **1 - 2**

---

FOUR NEW PRODUCTS IN THE MICHELIN POWER MOTOR CYCLE TYRE RANGE:

Page **3**

**MICHELIN Power 5**

THE SPORTIEST OF SPORT TOURING TYRES

Page **4**

**MICHELIN Power GP**

ROAD OR TRACK, NO NEED TO CHOOSE!

Page **5**

**MICHELIN Power Cup<sup>2</sup>**

DESIGNED FOR THE TRACK AND APPROVED FOR THE ROAD

Page **6**

**MICHELIN Power Slick<sup>2</sup>**

OPTIMISED FOR ULTIMATE GRIP ON TRACK

Page **7**

---

Photo link: <https://contentcenter.michelin.com/portal/shared-board/1532152f-4947-4828-bc2f-ade849cab9c7>

Photo credits : MICHELIN / Florent GIFFARD - MICHELIN / Eric Malherbe

# ***IN SUMMARY***

**A**t a time when mobility behaviours are evolving and when the needs of customers are becoming more and more significant, knowing how to anticipate, identify and respond to these needs is essential. Using high-performance and durable materials is imperative, so innovation becomes key.

The new products presented at EICMA last November are a perfect illustration of this.

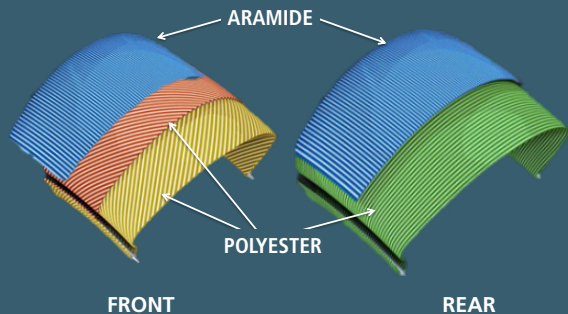
In 2019, the Michelin group devoted €687 million to research and development and this commitment has resulted in the MICHELIN Power range of motor cycle tyres, all of which are dedicated to enhancing the sensations, performance and pleasure of riding.

**By simultaneously launching four new tyre product ranges this year, Michelin is renewing its entire sport offering with MICHELIN Power which is designed to satisfy the most demanding motor cyclists in search of sportiness. These new products range from road use to 100% track: MICHELIN Power 5, MICHELIN Power GP, MICHELIN Power Cup<sup>2</sup>, MICHELIN Power Slick<sup>2</sup>.**

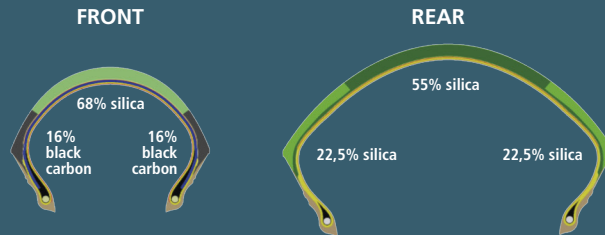
# AN AMBITIOUS CHALLENGE

In order to respond precisely to the needs of its customers, the renewal of the complete range allows us to bring consistency and complementarity in their development. Each of them has its own specific performance characteristics and it is through the use of high technology materials and the casing designs that each range gets its own characteristics.

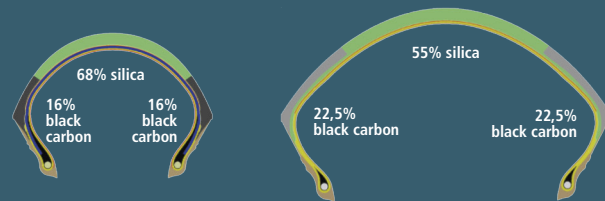
**A unique architecture, a clever balance between flexibility and rigidity, offering high performance whatever the lean angle taken by the rider and his motorcycle.**



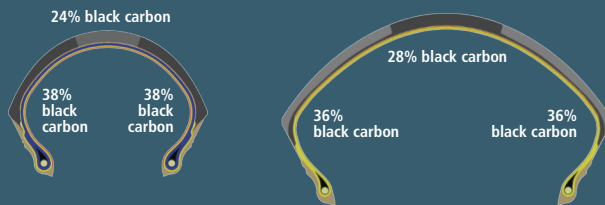
## MICHELIN POWER 5



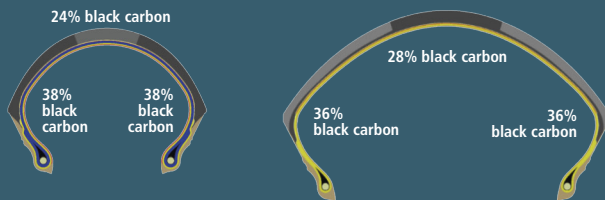
## MICHELIN POWER GP



## MICHELIN POWER CUP<sup>2</sup>



## MICHELIN POWER SLICK<sup>2</sup>



***FOUR NEW PRODUCTS  
IN THE MICHELIN POWER  
MOTOR CYCLE TYRE RANGE:***





# **MICHELIN POWER 5**

**THE SPORTIEST  
OF SPORT TOURING TYRES**

The MICHELIN Power 5 is mainly intended for riders of sport and sport touring bikes who use them primarily on the road. Grip in all conditions, especially in the rain, as well as good traction and reassuring behaviour under braking are among the requirements of these riders. The MICHELIN Power 5 therefore provides excellent grip in the wet.

## **THE TECHNICAL CHARACTERISTICS OF THE MICHELIN POWER 5:**

- An innovative rubber compound integrating silica and carbon black
- A MICHELIN 2CT compound at the front and MICHELIN 2CT+ at the rear which are designed to give the best performance levels in the wet
- An 11% tread groove to tread block ratio at the front and rear
- A new tread design and sidewalls integrating Michelin's "Premium Touch Technology"



### **MICHELIN POWER 5 SIZES:**

FRONT	120/70 ZR 17
	160/60 ZR 17
	180/55 ZR 17
REAR	190/50 ZR 17
	190/55 ZR 17
	200/55 ZR 17

# MICHELIN POWER GP

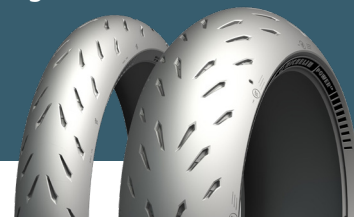
**ROAD OR TRACK,  
NO NEED TO CHOOSE!**



The MICHELIN Power GP is intended for riders who prefer sporty riding and do occasionally ride on circuits, during trackdays or initiation courses. For this, it offers a very good balance between adhesion and longevity whatever the conditions of use.

## THE CHARACTERISTICS OF MICHELIN POWER GP:

- An innovative silica and carbon black rubber compound
- MICHELIN 2CT compound at the front and MICHELIN 2CT+ at the rear, designed to give the best performance in dry conditions
- Slick shoulder areas, offering cornering grip and stability on track
- A groove to tread block ratio of 6.5% ensuring optimum rubber contact with the road
- Sidewalls featuring Michelin's "Premium Touch Technology"



## MICHELIN POWER GP SIZES:

FRONT	120/70 ZR 17
REAR	180/55 ZR 17
	190/50 ZR 17
	190/55 ZR 17
	200/55 ZR 17 <i>(available in Jan 2021)</i>



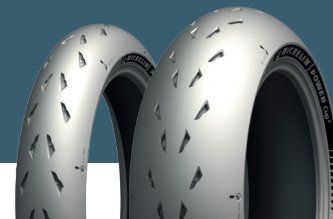
# **MICHELIN POWER CUP<sup>2</sup>**

**DESIGNED FOR THE TRACK  
AND APPROVED FOR THE ROAD**

The MICHELIN Power Cup<sup>2</sup> is a tyre designed for track use but approved for the road. Offering fast individual lap times, and also consistently fast on runs of two x 10-lap sessions in a row, it satisfies fans of trackdays.

## **THE CHARACTERISTICS OF MICHELIN POWER CUP<sup>2</sup>:**

- MICHELIN 2CT compound at the front and MICHELIN 2CT+ at the rear with a rubber compound mainly dedicated to track performance
- A groove to tread block ratio of 4% at the front and 5% at the rear, which gives the maximum rubber contact yet still allows it to be approved on the road
- Sidewalls featuring Michelin's "Premium Touch Technology"



## **MICHELIN POWER CUP<sup>2</sup> SIZES:**

FRONT	120/70 ZR 17
REAR	180/55 ZR 17
	190/55 ZR 17
	200/55 ZR 17





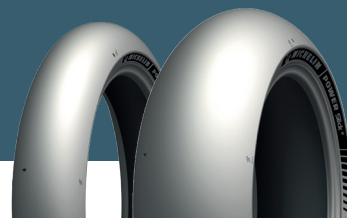
# **MICHELIN POWER SLICK<sup>2</sup>**

**OPTIMISED FOR ULTIMATE  
GRIP ON TRACK**

The MICHELIN Power Slick<sup>2</sup> is a tyre 100% dedicated to track use. It is not approved for the road and is specifically targeted at trackday enthusiasts. Particularly fast both on a single lap and also on runs of two x 10-lap sessions in a row, it is the ultimate track tyre. Easy to use, it does not require any specific adjustments to the motorcycle and its rapid warm-up eliminates the need for tyre warmers.

## **THE CHARACTERISTICS OF THE MICHELIN POWER SLICK<sup>2</sup>:**

- MICHELIN 2CT compound at the front and 2CT+ at the rear with a rubber compound totally dedicated to ultimate performance on track
- Sidewalls featuring Michelin's "Premium Touch Technology"



## **MICHELIN POWER SLICK<sup>2</sup> SIZES:**

FRONT	120/70 ZR 17
REAR	190/55 ZR 17 200/55 ZR 17

Michelin, the leading mobility company, is dedicated to enhancing its clients' mobility, sustainably; designing and distributing the most suitable tires, services and solutions for its clients' needs; providing digital services, maps and guides to help enrich trips and travels and make them unique experiences; and developing high-technology materials that serve a variety of industries. Headquartered in Clermont-Ferrand, France, Michelin is present in 170 countries, has more than 127,000 employees and operates 69 tire production facilities which together produced around 200 million tires in 2019. ([www.michelin.com](http://www.michelin.com))

