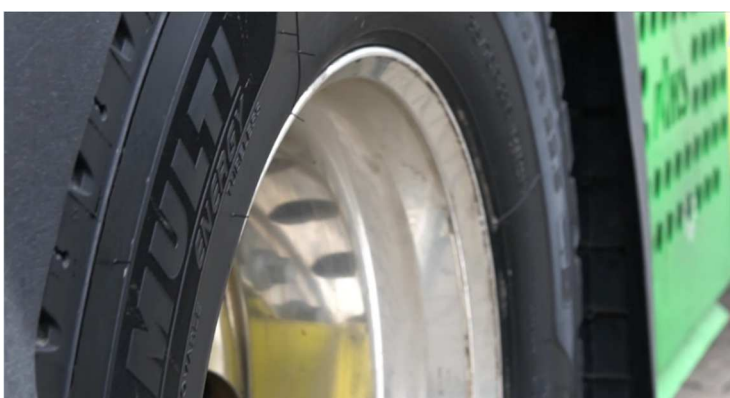


The MICHELIN X® Multi™ Energy™ range extends its tractor-unit line-up with two new tires

- Two tractor-unit tires eagerly awaited by the regional trucking community
- Fuel savings and reduced CO₂ emissions combined with increased mileage, safety and versatility
- A smaller environmental footprint and lower operating costs



On February 1, 2021 the MICHELIN X® Multi™ Energy™ family of regional truck tires was enhanced with two new 315/80R22.5 fitments in the MICHELIN X® Multi™ Energy™ Z steer tire and the MICHELIN X® Multi™ Energy™ drive tire lines. The eagerly awaited new size comes in addition to the 315/70R22.5 tire already on the market.

Launched in 2018, MICHELIN X® Multi™ Energy™ is the first regional transport range that improves fuel efficiency, fuel consumption and CO₂ emissions, while offering high levels of mileage and safety. Fuel efficiency combined with long mileage means that fleets have a low cost of ownership.

The last two features stem from the tire's low rolling resistance, which can:

- Save up to 1.1 liters of fuel per 100 kilometers compared to the MICHELIN X® Multi™ range (based on VECTO calculations¹).
With fuel representing a trucking company's second largest expense, MICHELIN X® Multi™ Energy™ tires can help to lower fleet operating costs.
- Reduce the environmental footprint by up to 2,840 kg of CO₂ per 100 kilometers².
MICHELIN X® Multi™ Energy™ tires meet the needs of truck manufacturers, who are subject to VECTO regulations.

The line-up's extensive range of performance features reflects the combined benefits of three main innovative, patented technologies:

- **MICHELIN Infinicoil technology** amounts to a steel wire of up to 400 meters long that is continuously wound around the crown to improve tread stability, save fuel and lengthen tire life, thereby increasing mileage.
- **MICHELIN Regenion technology** uses metal 3D printing to produce complex molds to make tread blocks capable of self-regenerating as they wear down. This maintains the tread pattern's void ratio, and therefore its ability to evacuate water and deliver grip throughout the life of the tire.

- **MICHELIN Powercoil technology** embodies a new generation of more robust steel casing cables that are lighter, more durable and better able to reduce rolling resistance.



Designed to be regrooveable and retreadable, MICHELIN X® Multi™ Energy™ tires are also marked both 3PMSF and M+S, attesting to the superior grip maintained in all types of weather conditions, in both rain and snow.

1. A 1.1 l/100 km improvement for the MICHELIN X® Multi™ Energy™ Z and D 315/70R22.5 tires vs. the MICHELIN X® Multi™ Z and D 315/70R22.5 tires; and a 0.7 l/100 km improvement for the MICHELIN X® Multi™ Energy™ Z and D 315/80R22.5 tires vs. the MICHELIN X® Multi™ Z and D 315/80R22.5 tires.

2. A 2.84 kg of CO₂/100 km improvement for the MICHELIN X® Multi™ Energy™ Z and D 315/70R22.5 tires vs. the MICHELIN X® Multi™ Z and D 315/70R22.5 tires; and a 1.8 kg of CO₂/100 km improvement for the MICHELIN X® Multi™ Energy™ Z and D 315/80R22.5 tires vs. the MICHELIN X® Multi™ Z and D 315/80R22.5 tires.

Certified values using the VECTO calculation tool comparing the fuel consumption and CO₂ emissions of a standard 4x2 tractor unit and a three-axle semi-trailer (with neutralization of the S-T effect), over regional (50%) and long-distance (50%) hauls, with a standard cargo load.

The Vehicle Energy Consumption Calculation Tool (VECTO) was developed by the European Commission with JRC, IVT and TUV GRAZ to improve customer awareness of the CO₂ emissions of the heavy-duty trucks they wish to buy or use and to introduce minimum standards to reduce these emissions. For more information, please visit:

<https://ec.europa.eu/jrc/en/publication/report-vecto-technology-simulation-capabilities-and-future-outlook>

Click here to see the photos and videos:

<https://contentcenter.michelin.com:443/portal/shared-board/ae469763-d3d3-4c0b-9e7e-b043283be4e0>

Michelin Media Relations: +33 (0)1 45 66 22 22

Michelin, the leading mobility company, is dedicated to enhancing its clients' mobility, sustainably; designing and distributing the most suitable tires, services and solutions for its clients' needs; providing digital services, maps and guides to help enrich trips and travels and make them unique experiences; and developing high-technology materials that serve a variety of industries. Headquartered in Clermont-Ferrand, France, Michelin is present in 170 countries, has more than 127,000 employees and operates 69 tire production facilities which together produced around 200 million tires in 2019. (www.michelin.com).