

Boulogne-Billancourt 11 March 2022

## **New MICHELIN STARCROSS 6** MX tires designed for podium results

- **Compared with its predecessor – MICHELIN STARCROSS 5, it offers:**
  - 16 percent more traction\***
  - 19 percent better durability\*\***
- **First MICHELIN motocross tire to use MICHELIN Silica Technology**



Michelin has launched its latest motocross tire range, the new MICHELIN STARCROSS 6, which was developed in association with top professional riders competing at national and international levels.

Available in all popular sizes covering 100 percent of the adult motocross market, the MICHELIN STARCROSS 6 range will comprise five different versions to suit all types of track conditions and rider preferences: Medium/Soft, Medium/Hard, Hard, Sand, and Mud (rear only). These will be available in dealers from March through to July 2022 depending on the version and geographical region.

Compared to its predecessor, the MICHELIN STARCROSS 5, the new MICHELIN STARCROSS 6 uses technologies developed in Michelin's R&D centers and fine-tuned on racetracks around the world to offer 16 percent more traction\* and 19

## GROUP

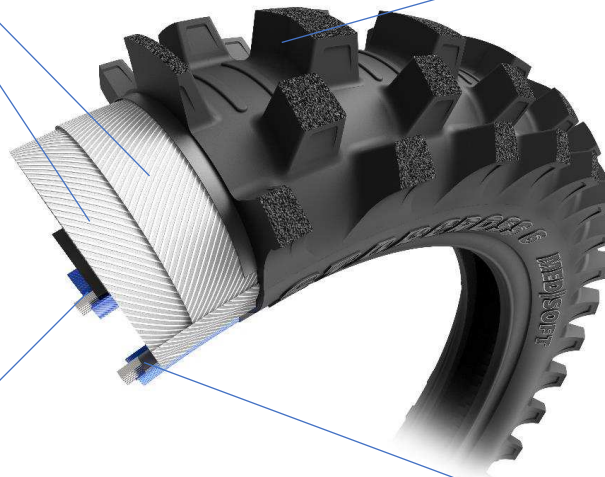
percent better durability\*\*. These improvements mean that riders can push their bikes to higher performance levels, while at the same time benefitting from longer-lasting tire performance.

### Technologies:

#### Tire Architecture

**DOUBLE PLY CARCASS:** Provides high levels of damage resistance

**TREAD BLOCKS 'Scooped':**  
Offer optimized traction



**PROTECTION RUBBER:** Offers puncture protection reinforcement

**REINFORCED BEADS:**  
Protects the lower part of the tire during fitting/removal, and from the aggressions of the rim during riding

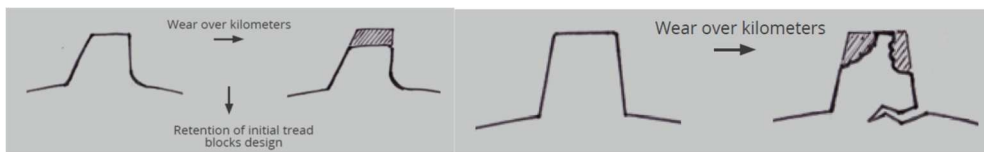
#### Tread Designs

MICHELIN Adaptive Design offers a balance of grip and handling for the front tire and grip/traction and longevity for the rear due to specific positioning of the central, intermediate and lateral tread blocks in the three key zones of the tire. In addition, the adaptive tread designs used on the Medium/Soft, Medium/Hard and Hard versions allow the direction of tire rotation to be reversed, on both front and rear tires, to optimize performance and tire life to suit the specific terrain and conditions.

GROUP

Rubber Compounds

Used for the first time ever on a MICHELIN motocross tire, MICHELIN Silica Technology (left illustration) offers long-lasting grip and improvements in tire life compared to compounds using carbon black (right).



Performance proven on track

The development of the MICHELIN STARCROSS 6 tires with professional riders and teams took place at MXGP, MXEURO and various national MX championships.

Usage/Terrain

	ROAD LEGAL	TERRAIN				
		SAND	MUD	SOFT	INTERMEDIATE	HARD
<b>MOTOCROSS</b>						
MICHELIN <b>MSW</b> STARCROSS 6 SAND		████████████████████				
MICHELIN <b>MSW</b> STARCROSS 6 MUD - REAR		██████████	████████████████████			
MICHELIN <b>MSW</b> STARCROSS 6 MS - FRONT		██████████	████████████████████	██████████		
MICHELIN <b>MSW</b> STARCROSS 6 MS - REAR		██████████	████████████████████	██████████		
MICHELIN <b>MSW</b> STARCROSS 6 MH				████████████████████	██████████	
MICHELIN <b>MSW</b> STARCROSS 6 HARD					██████████	████████████████████

N.B. Michelin recommended operating pressure: 0.9 bar/13 PSI

Minimum operating pressure: 0.8 bar/11.6 PSI

*Recommended pressures depending on the terrain, weather conditions, power of the bike and type of riding.*



## GROUP

### Available sizes/versions:

90/100 - 21 M/C 57M STARCROSS 6 HARD NHS F TT  
110/90 - 19 M/C 62M STARCROSS 6 HARD NHS R TT  
80/100 - 21 M/C 51M STARCROSS 6 MEDIUM HARD NHS F TT  
90/100 - 21 M/C 57M STARCROSS 6 MEDIUM HARD NHS F TT  
100/90 - 19 M/C 57M STARCROSS 6 MEDIUM HARD NHS R TT  
110/90 - 19 M/C 62M STARCROSS 6 MEDIUM HARD NHS R TT  
110/100 - 18 M/C 64M STARCROSS 6 MEDIUM HARD NHS R TT  
120/80 - 19 M/C 63M STARCROSS 6 MEDIUM HARD NHS R TT  
120/90 - 18 M/C 65M STARCROSS 6 MEDIUM HARD NHS R TT  
80/100 - 21 M/C 51M STARCROSS 6 MEDIUM SOFT NHS F TT  
90/100 - 21 M/C 57M STARCROSS 6 MEDIUM SOFT NHS F TT  
100/90 - 19 M/C 57M STARCROSS 6 MEDIUM SOFT NHS R TT  
110/90 - 19 M/C 62M STARCROSS 6 MEDIUM SOFT NHS R TT  
110/100 - 18 M/C 64M STARCROSS 6 MEDIUM SOFT NHS R TT  
120/80 - 19 M/C 63M STARCROSS 6 MEDIUM SOFT NHS R TT  
120/90 - 18 M/C 65M STARCROSS 6 MEDIUM SOFT NHS R TT  
100/90 - 19 M/C 57M STARCROSS 6 MUD NHS R TT  
110/90 - 19 M/C 62M STARCROSS 6 MUD NHS R TT  
80/100 - 21 M/C 51M STARCROSS 6 SAND NHS F TT  
100/90 - 19 M/C 57M STARCROSS 6 SAND NHS R TT  
110/90 - 19 M/C 62M STARCROSS 6 SAND NHS R TT

\*MICHELIN STARCROSS 6 Medium/Soft compared to MICHELIN STARCROSS 5 Soft and MICHELIN STARCROSS 6 Medium/Hard compared to MICHELIN STARCROSS 5 Medium in internal studies carried out at various MX tracks using a KTM 450 EXC-F during 2021.

\*\*MICHELIN STARCROSS 6 Medium/Hard compared to MICHELIN STARCROSS 5 Medium in internal studies carried out at various MX tracks using a Yamaha 450 YZF during 2021.

Michelin, the leading mobility company, is dedicated to enhancing its clients' mobility, sustainably; designing and distributing the most suitable tires, services and solutions for its clients' needs; providing digital services, maps and guides to help enrich trips and travels and make them unique experiences; and developing high-technology materials that serve a variety of industries. Headquartered in Clermont-Ferrand, France, Michelin is present in 170 countries, has 123,600 employees and operates 71 tire production facilities which together produced around 170 million tires in 2020. ([www.michelin.com](http://www.michelin.com))

## MICHELIN GROUP MEDIA RELATIONS

**+33 (0) 1 45 66 22 22**



[www.michelin.com](http://www.michelin.com)



@MichelinPress

27 cours de l'Île Seguin, 92100 Boulogne-Billancourt