

# BFGoodrich® ROUTE CONTROL® S

*Steer/all-position tire designed to take on the toughest of regional and city routes to maximize your uptime and help keep your delivery commitments.*



## Application

Highway	Regional	Urban	Coach/Bus	On/Off-Road

## Position

Steer	Drive	Trailer

## All Season



## Wear Life



## Durability



## Fitments



■ Recommended Application    ■ Acceptable Application



[www.BFGoodrichTruckTires.com](http://www.BFGoodrichTruckTires.com)

**BFGoodrich®**  
Tires



# BFGoodrich® ROUTE CONTROL® S

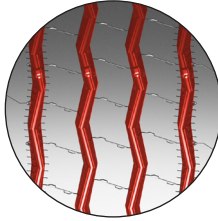
Steer/all-position tire designed to take on the toughest of regional and city routes to maximize your uptime and help keep your delivery commitments.



## ALL SEASON CONFIDENCE

Keep delivering in all seasons

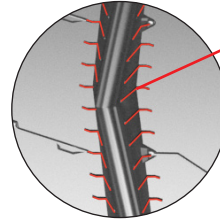
- Zig-zag, flow-thru groove design for outstanding water evacuation and grip



## LONG TREAD LIFE

Designed to provide long tread life and exceptional, even-wear performance

- Increased tread width versus the BFGoodrich® ST230 tire
- New tread design with optimized microspicing technology fights the onset of irregular wear across the tread



## GUARANTEED TO DELIVER. RAIN, SNOW OR OVER CURBS.

### SIX MONTH ROAD TEST GUARANTEE<sup>(1)</sup>

If you're not completely satisfied with the BFGoodrich® Route Control® S tire in the first six months of use or before 50% of its usable tread life—whichever comes first—we will reimburse 50% of your acquisition price per tire.\*



(1) Please see BFGoodrichTruckTires.com > Reference Manuals > Warranties/Guarantees for details.



## CASING DURABILITY

Legendary BFGoodrich® Casing

- Designed to take on curbs and potholes in the regional environment
- Excellent retreadability to make the most of your investment



**5 YEAR**<sup>(2)</sup>

5 Year / 2-Retread Manufacturer's Limited Casing Guarantee

Size	Load Range	Catalog Number	Tread Depth 32nds	Max. Speed (3)		Loaded Radius		Overall Diameter		Overall Width (4)		Approved Wheels (Measuring wheel listed first)	Min. Dual Spacing (4)		Revs Per Mile	Max. Load Per Tire Single				Max. Load Per Tire Dual			
				mph	km/h	in.	mm.	in.	mm.	in.	mm.		in.	mm.		lbs.	psi	kg.	kPa	lbs.	psi	kg.	kPa
11R22.5	H	03285	18	75	120	19.2	489	41.2	1045	11.2	284	8.25, 7.50	12.5	318	503	6610	120	3000	830	6005	120	2725	830
255/70R22.5	H	52587	16	75	120	17.4	441	36.5	927	10.2	258	7.50, 6.75, 8.25	11.6	295	563	5510	120	2500	830	5070	120	2300	830
275/80R22.5	G	39319	18	75	120	18.6	473	39.9	1014	11.0	279	8.25, 7.50	12.2	311	519	6175	110	2800	760	5675	110	2575	760
11R24.5	H	65269	18	75	120	20.2	513	43.2	1097	11.3	287	8.25, 7.50	12.5	318	479	7160	120	3250	830	6610	120	3000	830
285/75R24.5	G	05454	18	75	120	19.3	490	41.1	1045	10.7	272	8.25, 7.50	12.2	311	503	6175	110	2800	760	5675	110	2575	760

Note: Wheel listed first is the measuring wheel.

(1) Please see BFGoodrichTruckTires.com > Reference Manuals > Warranties/Guarantees for details.

(2) 5 Year / 2-Retread Limited Casing Guarantee when retreaded by an authorized Michelin Retread Technologies (MRT) Dealer or an Oliver Retread dealer.

(3) Exceeding the lawful speed limit is neither recommended nor endorsed.

(4) Tire section widths and overall widths will change 0.1 inch (2.5 mm) for each 1/4 inch change in wheel width. Minimum dual spacing should be adjusted accordingly.

BFGoodrich® tires are subject to a continuous development program. BFGoodrich® Commercial Truck Tires reserves the right to change product specifications at any time without notice or obligation.

MNA, Inc. continually updates its product information to reflect any changes in Industry Standards. Printed material may not reflect the current Load and Inflation information. Please visit [www.bfgoodrichtrucktires.com](http://www.bfgoodrichtrucktires.com) for the latest product information. The actual load and inflation pressure used must not exceed the wheel manufacturer's maximum conditions. Never exceed a wheel manufacturer's limits without permission from the component manufacturer.

Application	Highway	Regional	Urban	Coach/Bus	On/Off-Road

Position	Steer	Drive	Trailer

■ Recommended Application ■ Acceptable Application

» Take control today at [BFGoodrichTruckTires.com](http://BFGoodrichTruckTires.com)

To Find Your Nearest BFGoodrich® Commercial Truck Tire Dealer Call:

United States, 1-877-788-8899; Canada, 1-888-871-6666

or visit [www.bfgoodrichtrucktires.com](http://www.bfgoodrichtrucktires.com)

© 2021 MNA, Inc. All rights reserved. BWL12002 (04/21)