

MICHELIN X MULTI D TL

DRIVE POSITION TUBELESS TYRE FOR MIXED REGIONAL AND LONG DISTANCE SERVICE



- Minimized tyre operating costs
- Maximized safety



MICHELIN X MULTI D TL

DRIVE POSITION TUBELESS TYRE FOR MIXED REGIONAL AND LONG DISTANCE SERVICE



Minimized tyre operating costs

Maximum mileage

- Optimized design with long hexagonal blocks delivers an improved wear form throughout tyre life.
- New longer lasting tread compound to improve tyre life.

Without compromise on fuel consumption

- Rolling resistance close to an All Position tyre.*

Maximized retreadability

- Shoulder rib with high "Bridges" to prevent scrubbing damage.
- Strong bead wires to protect against bead damages.
- New in 295/80R22.5: Additional full metallic ply for better resistance to crown impact and penetration.

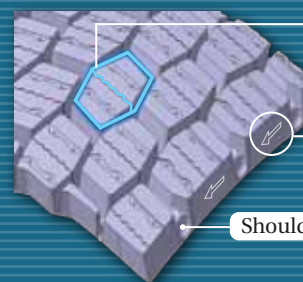
Maximized safety

- Directional tread pattern provides outstanding traction on drive axles.
- 192 hexagonal blocks with "double wave" sipes deliver exceptional grip until end of tyre life.

New in 295/80R22.5 : Additional full metallic ply



Reinforced bead design



Hexagonal block with double wave sipes

Directional rotation

Shoulder bridges

Durable block shape for exceptional traction



New tyre

50% worn tyre

* X Multi D compared to XZE 2+

TYRE SIZE

11 R22.5

295/80 R22.5

NEW

MICHELIN RECOMMENDATIONS

VEHICLE	POSITION	TYRE SIZE	PATTERN	RIM WIDTH	INFLATION PRESSURE

For more information, visit our site: www.michelintransport.com.xx



Warning: MICHELIN truck tyres are designed and optimized for specific conditions of usage which can be found in the MICHELIN Truck and Bus Tyre Technical Data Book and MICHELIN Truck and Bus Tyre Service Manual. It is therefore, not advisable to use the product in conditions of use outside the parameters for which it was designed for. Operations outside these parameters are identified as abnormal usage and are not eligible for warranty consideration.

Serious or fatal injury may result from tyre failure as a result of operating outside the tyres intended conditions of use. Refer to the MICHELIN Truck and Bus Tyre Technical Data Book (Asia Edition), MICHELIN Truck and Bus Tyre Service Manual, or consult your MICHELIN Truck Tyre professional for recommendations and procedures.

