

*A FEW INCHES<sup>2</sup>*  
**OF HIGH PERFORMANCE  
FOR PISTON AND TURBOPROP  
AIRCRAFT**



*MICHELIN<sup>®</sup> PILOT<sup>®</sup>*  
**BIAS TIRE**



## A FEW INCHES<sup>2</sup> HELPING YOU RISE ABOVE THE CLOUDS

The all-new MICHELIN® PILOT® high performance bias tire is designed to be the best tire money can buy for propeller driven aircraft. It offers highly-durable rubber compounds and up to 21% deeper skid depth than a leading competitor's tires\* to help provide more landings. It also includes our latest carcass technology for exceptional strength and durability, and many other state-of-the-art features.

## A HIGH-PERFORMANCE BIAS TIRE DESIGNED FOR PROPELLER AIRCRAFT, OFFERING EXCEPTIONAL SERVICE LIFE AND ALL-WEATHER SAFETY



### EXTRA LONG TIRE LIFE

More landings due to highly-durable rubber compounds and up to 21% deeper skid depth than the leading competitor's tires\*\*.



### OPTIMIZED TREAD PROFILE

Helps provide for true track taxi, take offs, and landings.



### TUBELESS DESIGN

Reduces overall wheel weight and helps eliminate tire creep on the wheel.

(MICHELIN® Pilot® tires can be used with a tube on tube-type rims)



### ALL WEATHER PROTECTION

Designed for longterm ozone and UV light protection, and excellent hydroplane resistance.



### EXCEPTIONAL BALANCE

Exclusive manufacturing process results in built-in balance for smooth taxiing and even tire wear.



## A FEW INCHES<sup>2</sup> OF ULTIMATE PERFORMANCE

### EXTRA LONG TREAD LIFE

In addition to 21% deeper skid\*, the Michelin Pilot features an optimized tread profile, designed for even pressure distribution in the contact area, extending the life of the tire.

### AN IMPROVED CARCASS STRUCTURE

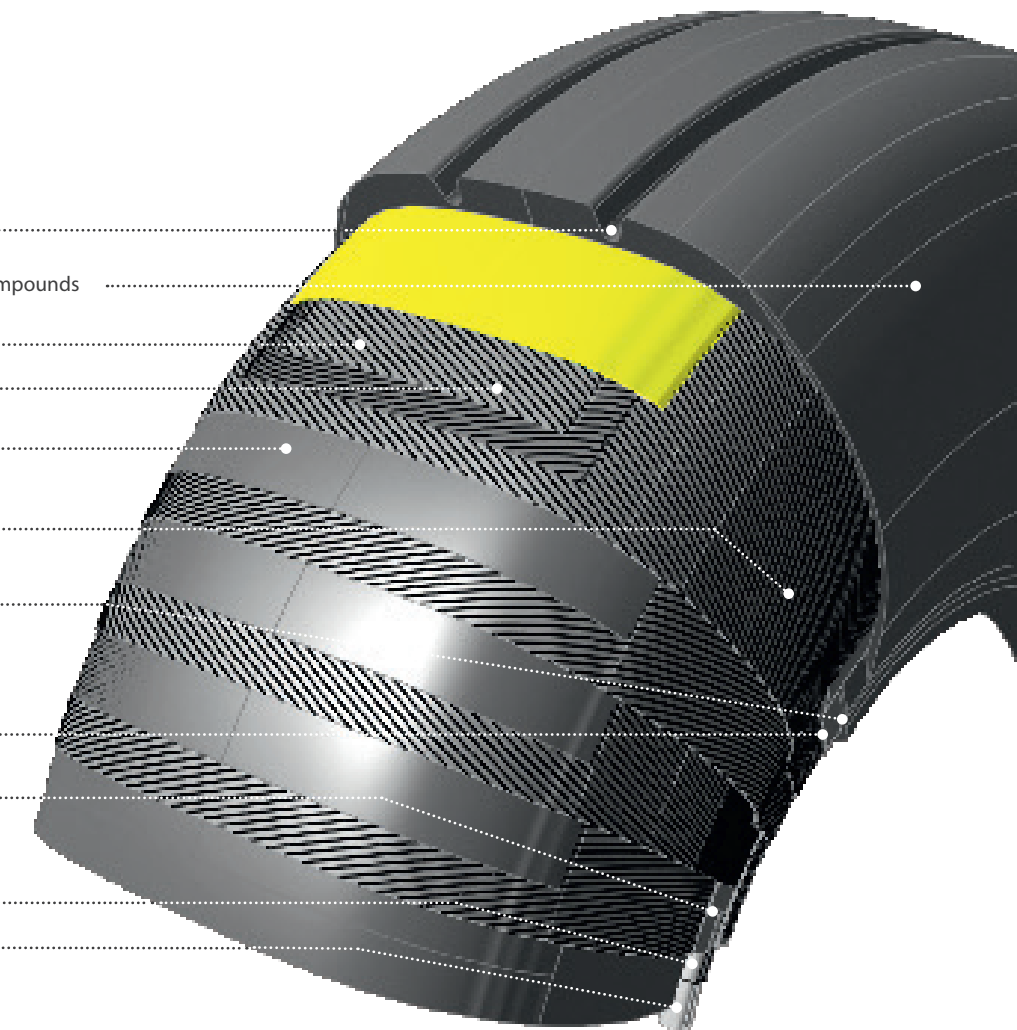
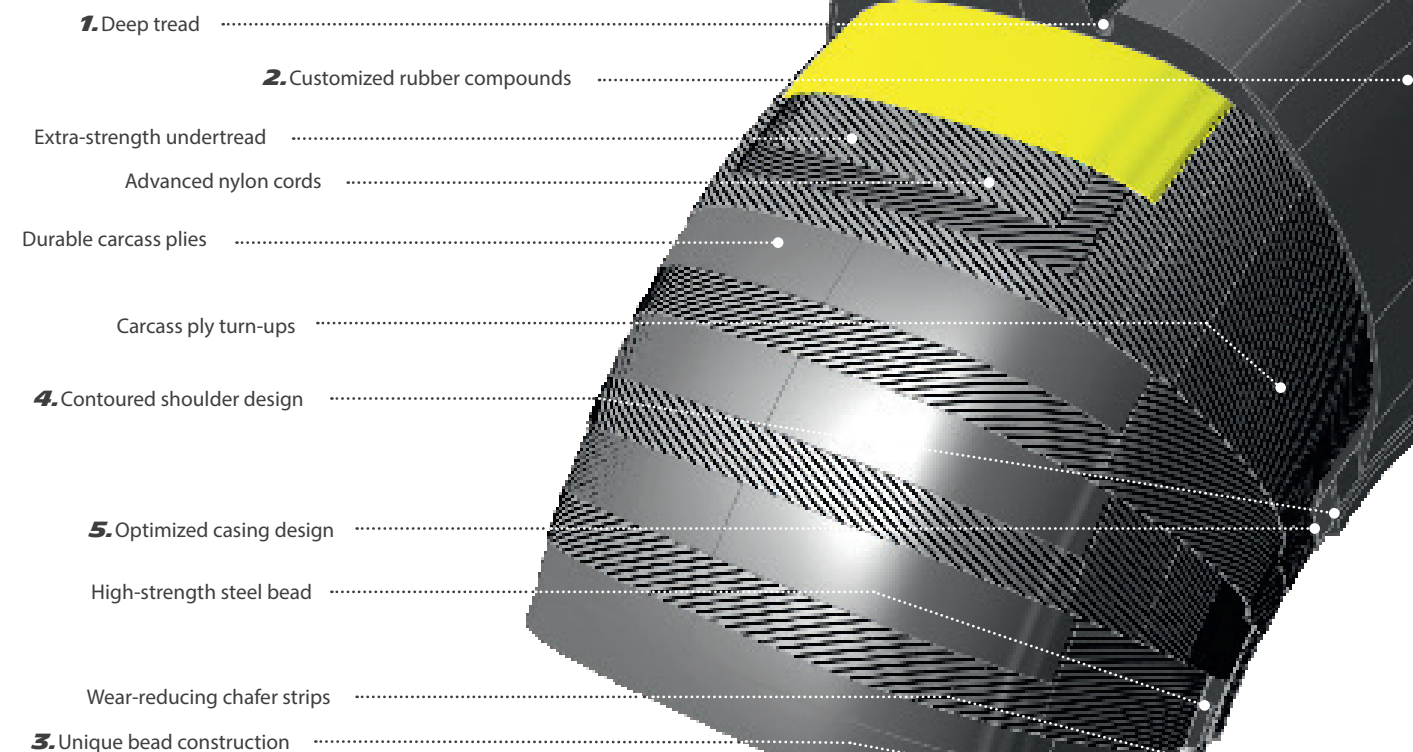
The Michelin® Pilot® tire employs the latest technologies in carcass design, to allow deeper skid depth, with less weight. This results in more landings while also reducing fuel burn, thus extending the range. The modern carcass structure is also designed for improved balance and a smoother, better tracking ride.

### PROTECTION AGAINST ALL WEATHER

The Michelin® Pilot® benefits from the latest high-tech ozone and UV resistant components, providing protection in all weather conditions. The two large grooves in the tread effectively drain water on wet runways and promote excellent resistance to hydroplaning for safer operations in wet-weather conditions.

### A DESIGN WITH OR WITHOUT TUBE

The Michelin® Pilot® tire natural contour carcass line reduces ply stresses, and its tubeless-tire design improves the overall weight of the mounted assembly (wheel+tire) while ensuring that the tire is not rotated on the tire wheel. This high-performance bias tire can also be used with an inner tube, offering the same performance improvement to pilots who use tube-type rims.







## **MICHELIN SALES OFFICE LOCATIONS**

Europe, CIS, Middle East & Africa  
Michelin Aircraft Tyre  
23, Place des Carmes-Déchaux  
63040 Clermont-Ferrand Cedex 9  
France  
Phone: +33 (0) 4 73 30 14 85

North, Central & South America  
North America  
Michelin Aircraft Tire Company  
One Parkway South  
Greenville, South Carolina 29615 USA  
Phone: +1-877-503-8071

Central & South America  
Av. das Américas, 700 • Bloco 4  
Barra da Tijuca  
Rio de Janeiro  
RJ-BRAZIL  
Phone: +55-21-3621-4711

Asia and Oceania  
Thailand  
Michelin Siam Co., Ltd.  
Head Office in Bangkok  
33/4 Rama 9 Road,  
Huay Kwang Sub-district,  
Huay Kwang District,  
Bangkok 10310, THAILAND  
Phone: +662-700-3000

China  
Michelin Aircraft Tire Company  
Block 7, 518, North Fu Quan Road,  
Chang Ning District,  
Shanghai, 200335, P.R.CHINA  
Phone: (8621) 2285-5000